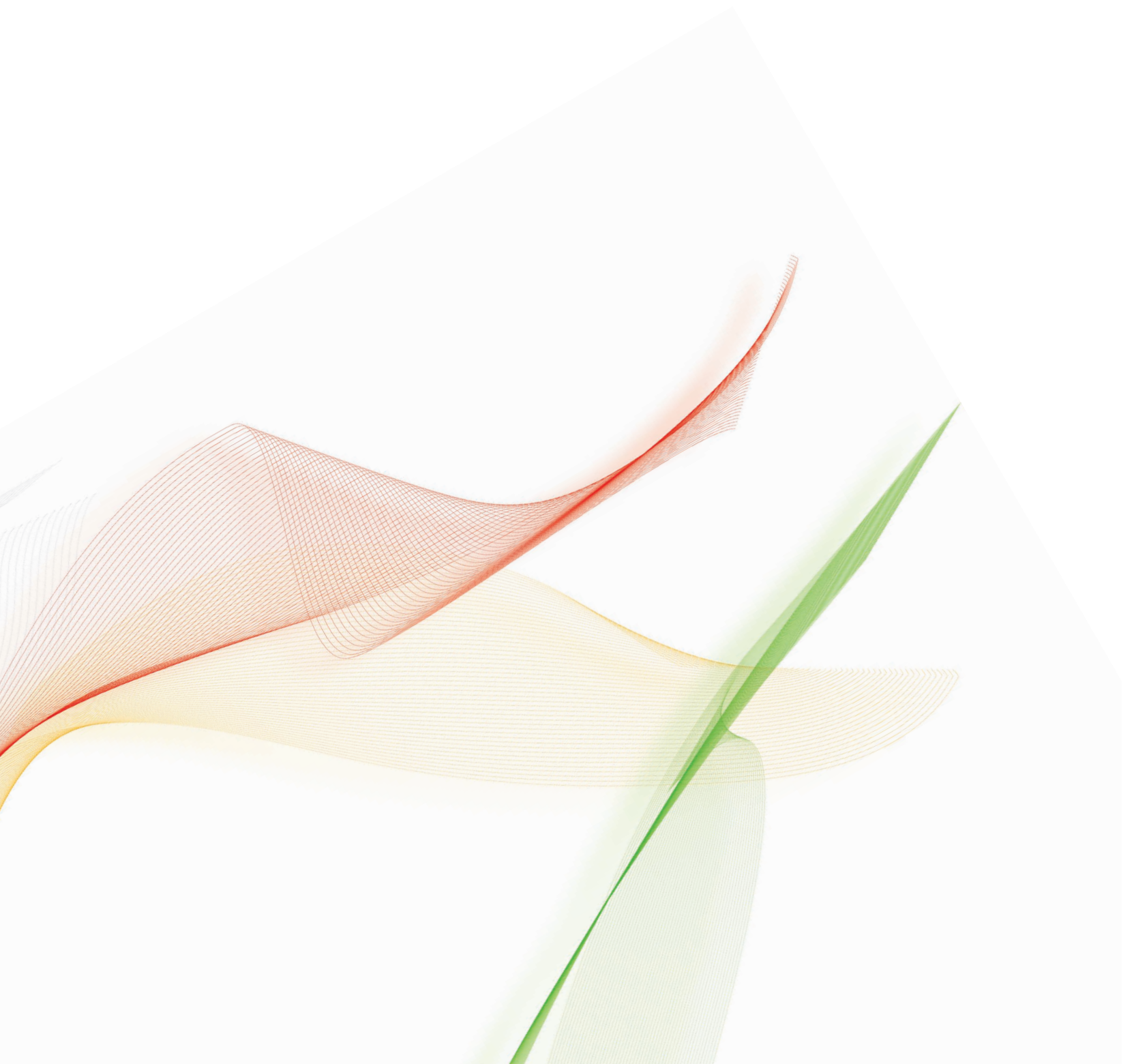
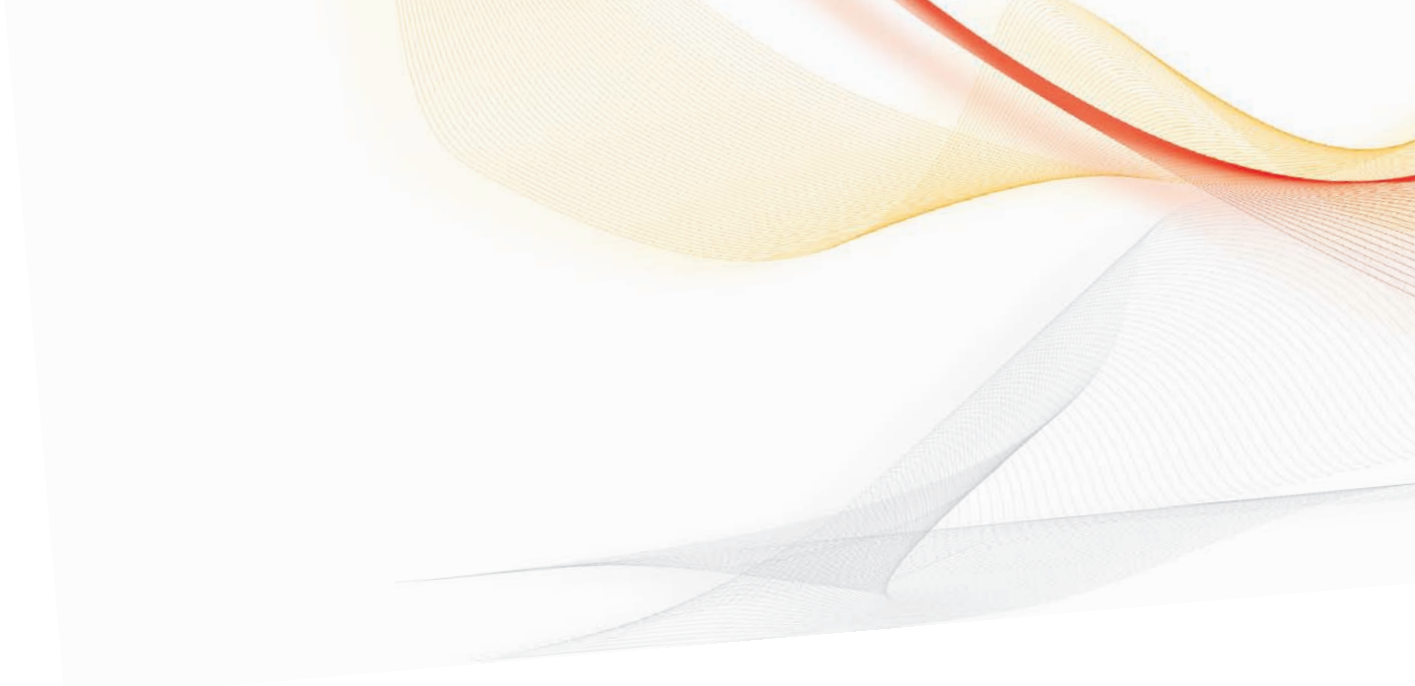




**AYRTON**

Light in action





Light in action





## INTRODUCTION

06 - 07

## LED STATIC LUMINAIRE

08 - 23

## LED MOVING HEAD LUMINAIRE

25 - 29

EYEBALL 50 & 100  
10 - 11

SLIMLED 150  
12 - 13

MODULED 150  
14 - 15

ARCALINE 50 & 100  
16 - 17

STREETLINE 50 & 100  
18 - 19

EYEFLOOR 50  
20

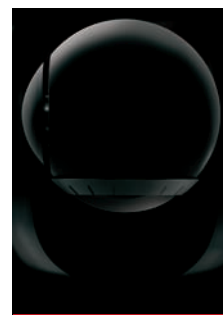
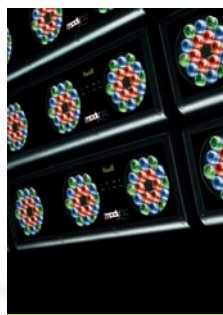
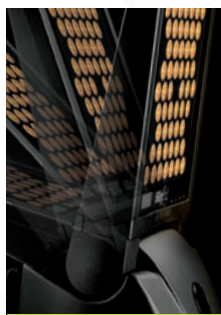
EYEMSEA 50  
21

INTELLIPOWER 150  
22

COUGAR 2  
23

EASYCOLOR 50  
26 - 27

EASYCOLOR 100  
28 - 29





## LED IMAGING DISPLAY

30 - 43

## TECHNICAL SPECIFICATIONS

44 - 49

## WARRANTY

50

DREAMPANEL WALL 64  
32 - 33

DREAMPANEL FLOOR 256  
34 - 35

DREAMPANEL SCREEN 256  
36 - 37

DREAMPANEL ARCHI 256 & 1024  
38 - 39

DREAMPANEL GHOST 256  
38 - 39

DREAMPANEL DV-384  
42

DREAMPANEL PX-32  
43

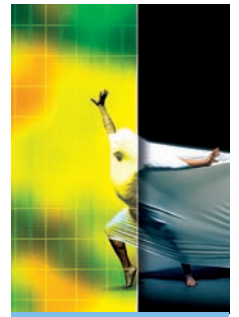
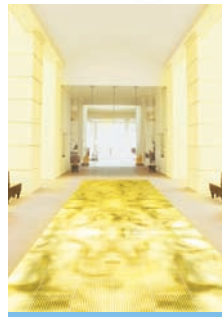
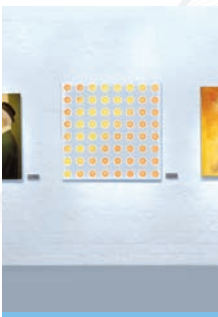
DREAMPANEL PSX-32  
43

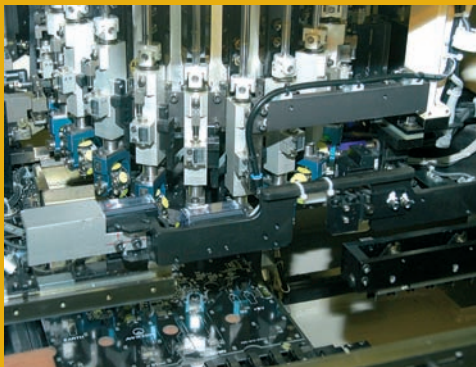
DREAMPANEL DX-384  
43

LED STATIC LUMINAIRE  
44 - 47

LED MOVING HEAD LUMINAIRE  
48

LED IMAGING DISPLAY  
49





The AYRTON brand was born in 2001 when Aestétique-designs, lighting and technology amateurs & virtuosi got together. AYRTON is specialized in developing intelligent LED light products for Entertainment and Architectural applications.

Based south of PARIS FRANCE, AYRTON Headquarters and Research & Development centre combine and organize the highest competence in engineering, software, electronics and optics, aiming to create highly innovative fixtures.

AYRTON lately refocused its organization to integrate in France the whole manufacturing process, maintaining a constant quality level and permitting a higher pliancy. All electronic board, led display, electronic power supply and other sensible parts are now directly produced, assembled and tested on site.

**November 2001**  
AYRTON Brand-name registration.

**February 2002**  
AYRTON starts the First professional LED moving head development designed for entertainment and architectural illumination.

**March 2003**  
The AYRTON brand-name is introduced during the ProLight + Sound show in Frankfurt, Germany, along with the presentation of the EYECOLOR, the very first professional LED moving-head fixture in the

**June 2003**  
EASYCOLOR evolves to include 18 high-power LUXEON LEDs from LUMILEDS that triple the light output.



**September 2003**  
EASYCOLOR 2 release at the PLASA Show in London, UK. Featuring 36 LUXEON LEDs each of 1W, it makes this latest version one of the most effective LED-based projectors on the market.



**September 2004**  
The Plasa 2004 show represents for AYRTON the era for a Technological break-through: Designed with 3 independent matrix-clusters each equipped with 18 High-Power LEDs, the AYRTON MODULED



# HISTORY



lighting industry. With its 192 pieces of 20 mW LEDs EYECOLOR is able to generate an unlimited palette of rich and saturated colours.

318 luminaire is designed to be a modular fixture allowing multiple units to be arranged in horizontal and vertical shapes, thus creating the ability to build matrix light effects.

# AYRTON, LIGHT IN ACTION

The AYRTON French production centre located 100km up north PARIS, ISO 9001 international certification awarded, is vouching for the company, along with its human and technical resources, to be entirely dedicated to customer demand satisfaction. To this extend and to strengthen its competitiveness, AYRTON has recently settled a Hong-Kong office to warrant certain parts and subset production in South-East Asia.

Set as a company philosophy, environment protection was prioritized years ago by AYRTON. All products anticipated the internationally recognized Full RoHS (Restriction of the use of certain Hazardous Substances) environment standards certification, bounding the use of toxic elements in electronic equipment constructions and come into force since July 2006.

AYRTON fixtures are created to answer any demanding installation and criteria, distributed through devoted and exclusive worldwide teams. AYRTON uses reliable, flexible and avant-garde technologies linked to innovative design, providing the AYRTON customers with wide range of pioneer lighting solutions to be installed in Stages, TV Studios, Show-venues and Architectural schemes.



## March 2005

AYRTON patents the internal structure of the floor modular video-tile, specifically conceived to sustain heavy loads on the tile without altering the projected image.



## April 2005

AYRTON comes to the fore at the ProLight + Sound show Frankfurt 2005 with a sensational LED-based product DREAMPANEL. This 50 x 50 cm ground-breaking LED-TILE is perfect for video floor



based staging. Designed to remove the need for complicated stage structures, DREAMPANEL FLOOR 256 gives Designers the capacity to virtually construct any shape of floor without concerns over floor loading.

## September 2006

AYRTON launch of the new DREAMPANEL SCREEN 256 totally dedicated to screen mounting applications, its cut-edge design & comprehensive features undoubtedly catch people's eyes.



What's sensational about the new DREAMPANEL SCREEN 256 model is the flexibility when rigging up; friendly installation and light suspension make this product a unique tool for any entertainment applications.

## February 2007

Presentation of the ARCALINE range. First products of the new generation of AYRTON luminaires, equipped with the latest LUXEON K2 LEDs from LUMILEDS and AYRTON's brand-new



Intelligent power supply which characteristic is to work in high range of temperature and high efficiency.

## March 2007

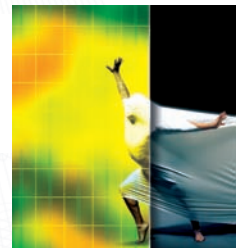
Adaptation of DREAMPANEL SCREEN 256 dedicated to architectural applications: DREAMPANEL WALL 64 is a compact module of 25 X 25 cm, designed



for permanent installation, and includes all the characteristics of the DREAMPANEL family on a smaller scale.

## September 2007

DREAMPANEL GHOST 256 take off. The new screen developed by AYRTON is the ultimate evolution of the range. Provided with a higher resolution of 1 820 LEDs per m<sup>2</sup> (pitch of 23,44 mm) with a



transparency over 50%, it allows dazzling spectacular effects with tremendous "see through" ability.







# LED STATIC LUMINAIRE

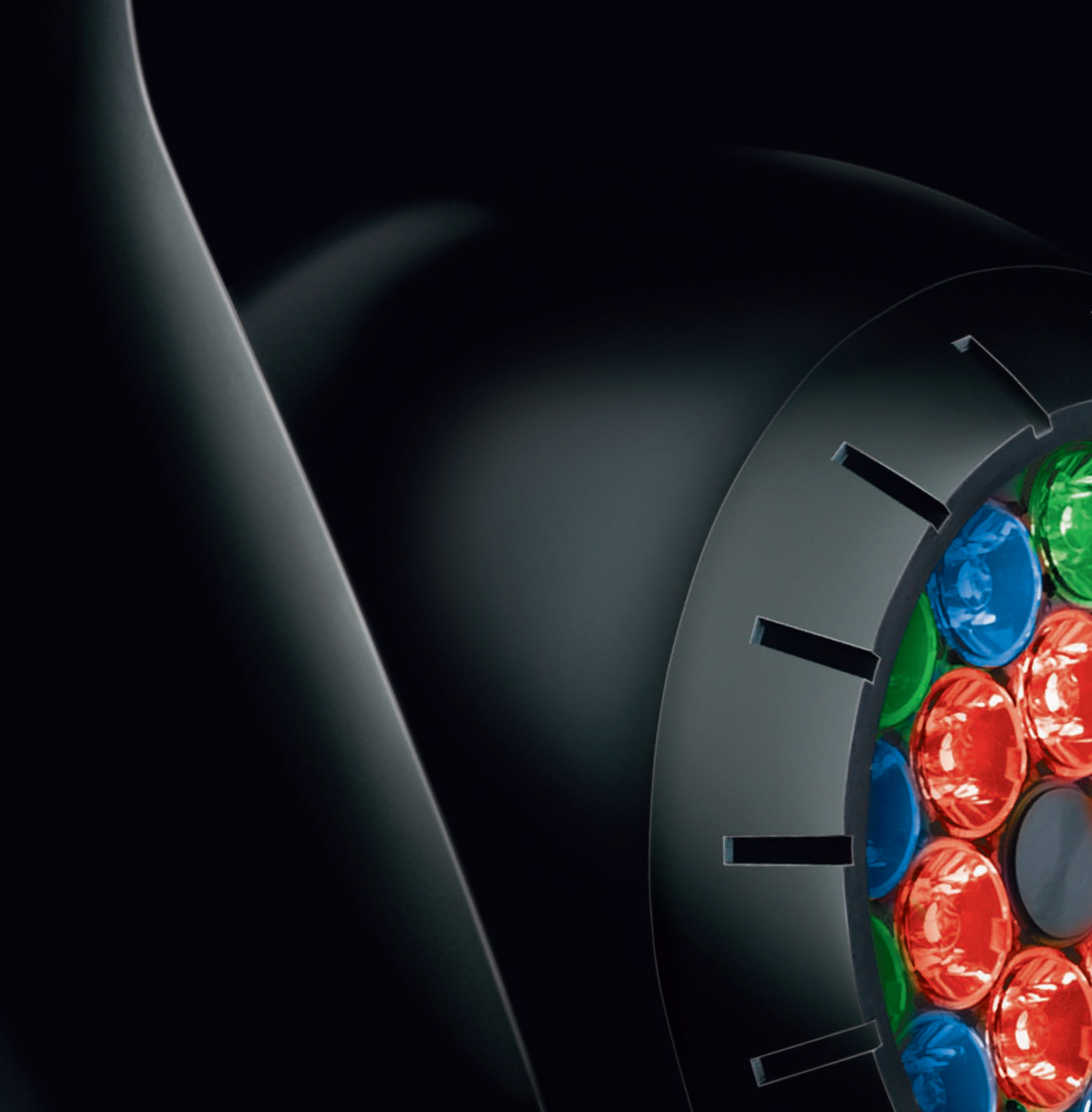
After the LED MOVING HEAD LUMINAIRE launch, AYRTON used its LED management knowledge to start a new lighting range for the professional lighting industry. This is how the MODULED 318 was born in 2004.

AYRTON quickly noticed that the existing Power Supply Units from the computer industry didn't correctly match with the intensive use in high warmth conditions, inside sealed-off products. AYRTON then created a complete new range of electronic power supply, designed for high temperature use, some even including LED management.

Due to the evolution of power LEDs, AYRTON developed and integrated thermal management system so as to adapt the spotlight power. AYRTON fixtures are optimized to eventually avoid their destruction and secure any use condition.



To reach an optimized LUMILED LUXEON K2 LEDs utilization, AYRTON has developed new optics permitting their integration into the existing range of luminaires, providing the best compromise between colour mixing, light output and assets. With a doubled power and a tripled light output compared to the same models in the previous generation, AYRTON is now able to introduce its whole new range of LED STATIC LUMINAIRES, equipped with these new high power LEDs.



IP 20 protection rating (Indoor use only)





# EyeBall

## EYEBALL 50 & 100 LED STATIC LUMINAIRE

EYEBALL 50 & EYEBALL 100 are the static evolution of the professional LED moving-head luminaire EASYCOLOR series. Equipped with 18 or 36 LUXEON K2 High power LEDs, EYEBALL 50 & 100 RGB are colour mixing fixtures emitting unlimited rich and saturated colour-hues. Fast exchange, no-tools optional filters, may be provided to adapt the luminaire to most user demands. EYEBALL 50 & 100 integrate innovative functions, as well as fixture addressing, parameter settings and software upgrading accessible through the optional COUGAR 2 handy-pocket-size distant controller, when connected to the projector through the DMX line.

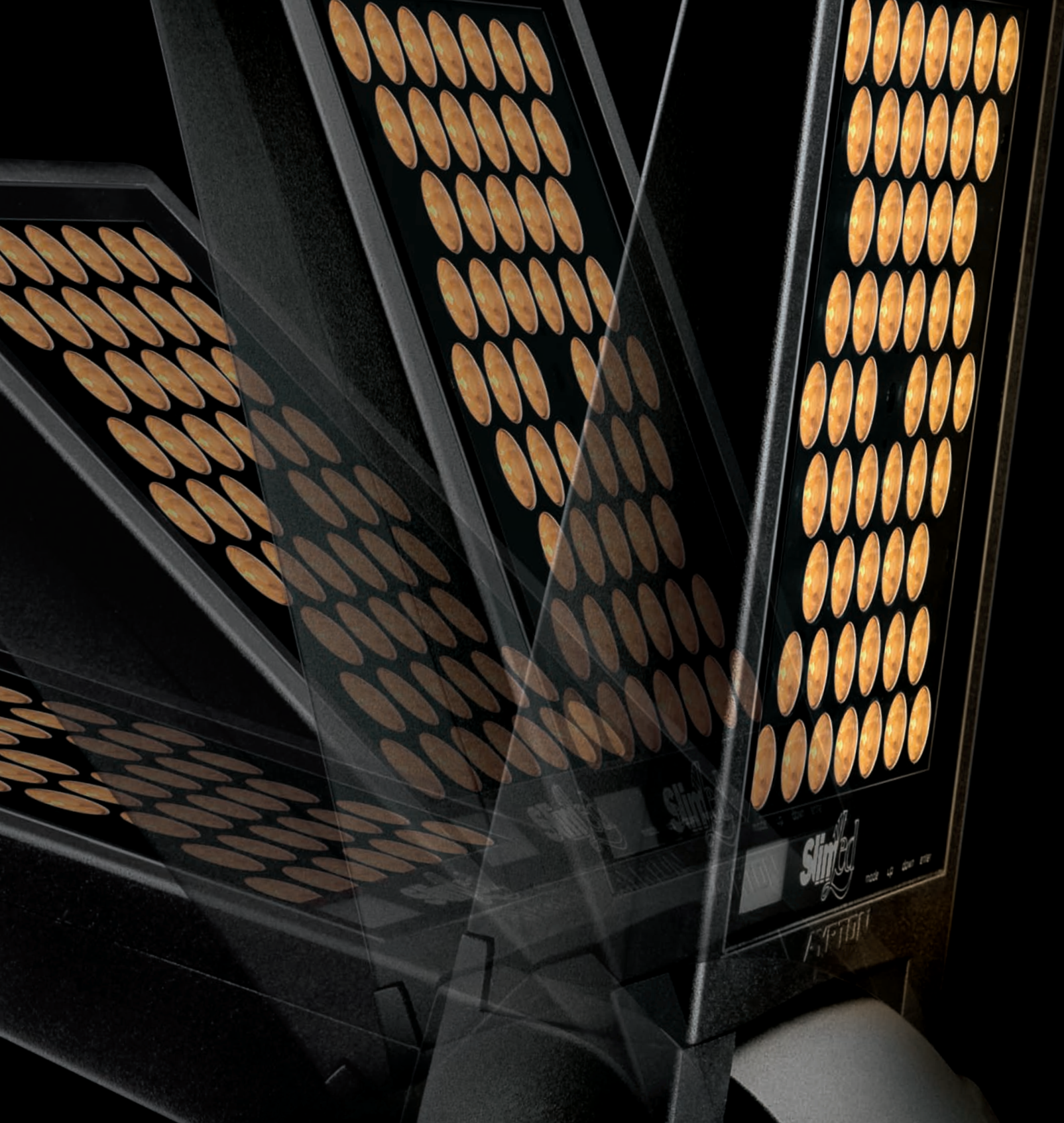
EYEBALL 50 & EYEBALL 100 incorporate an adjustable and mechanical head-positioning system, with automatic tightness-and-brake to reach and maintain any accurate lighting axis. EYEBALL 50 & 100, IP20 rated for indoor use only, along with its evenly round design is the perfect compact environmental luminaire for both permanent and temporary installations. EYEBALL range is ideal for show-venues, TV-Stages or architectural applications where the change of colour is crucial and a precise and sober lighting is required.

- Beam aperture: 13°
- Optional optic filters: up to 42° spot beam angle
- Light output: 1 200 lumens (EYEBALL 50) or 2 400 lumens (EYEBALL 100)
- Colour mixing: RGB
- Colour depth: 16.7 million
- Control by DMX 512 protocol (USITT, 1990)
- Electronic dimmer for adjustment of light output from 0 to 100% with no colour variation
- High-speed strobe effect with 1-25 fps flash rate
- Software facilities access via COUGAR 2 handy-pocket size controller (optional)
- Built-in thermal protection system
- Housing: self-extinguishing V0 class fire-retardant ABS PC moulded covers
- Structure: aluminium and steel plates
- Fixation: single arm with M10 mounting point

More technical specifications on page 44







IP 66 protection rating (Indoor/Outdoor use)



12







## SLIMLED 150 LED STATIC LUMINAIRE

SLIMLED 150 multi-orientation panel luminaire, combines 54 High-Power LUXEON K2 LEDs as its light-source, and is designed for the architectural area. SLIMLED 150 is extended in four LED source versions, all available in Carbon or Platinum. SLIMLED 150 RGB is a colour mixing luminaire, emitting unlimited choices of rich and saturated colour-hues. SLIMLED 150 FULL COLOR, also RGB colour mixing luminaire, generates a perfect uniform light beam, without multicoloured point sources or shadows. SLIMLED 150 AWW, an intelligent cold white and amber luminaire, permits to adjust the colour temperature scale from 2 800K to 6 500K. SLIMLED 150 AWB, an intelligent white luminaire as well, comes with an extended range of colour temperature from 2 800K to 9 500K.

Fixture addressing & parameter settings are accessible through its built-in control panel, located on the front side of the SLIMLED 150 luminaire. The optional handy-pocket-size distant controller COUGAR 2 also permits the SLIMLED 150 settings and software upgrade. The design of the SLIMLED 150 offers both indoor and outdoor possibilities, orientations from 20° forward to 80° backward locked up positions, and optional exchangeable optic filters to widen up the light beam angle. SLIMLED 150 remains the ideal fixture for all architectural illumination as well as show-venues, TV-stages or Exhibition applications.

- Beam aperture: 11° (RGB, AWW & AWB) or 19° (FULL COLOR)
- Optional optic filters: up to 44° spot beam angle, up to 36° X 20° elliptic beam angle
- Light output: up to 3 600 lumens, depending on models
- Colour mixing: RGB, AWB or AWW, depending on models
- Colour depth: 16.7 million (RGB, AWB & FULL COLOR) or 65 536 (AWW)
- Control by DMX 512 protocol (USITT, 1990)
- Electronic dimmer for adjustment of light output from 0 to 100% with no colour variation
- High-speed strobe effect with 1-25 fps flash rate
- Software facilities access via COUGAR 2 handy-pocket size controller (optional)
- Built-in thermal protection system
- Housing: die-cast aluminium with tempered glass
- Fixation: 4 M6 inserts or one omega quarter-turn bracket (optional)

More technical specifications on page 44







IP 66 protection rating (Indoor/Outdoor use)







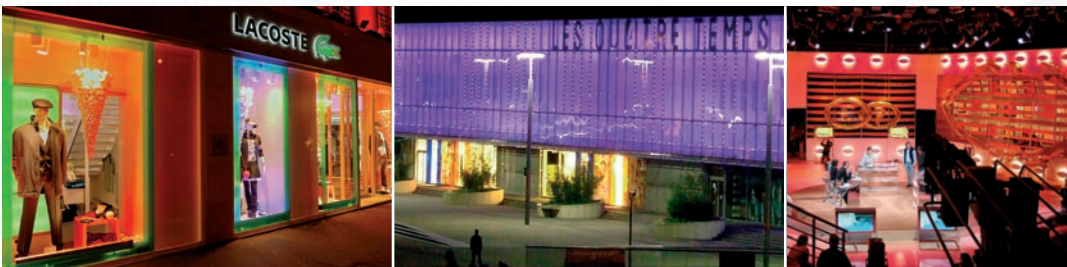
## MODULED 150 LED STATIC LUMINAIRE

MODULED 150, strengthened evolution of the most celebrated MODULED 318, is a modular fixture with 3 independent matrix-clusters individually operated. MODULED 150 is designed in four versions. MODULED 150 RGB equipped with 54 LUXEON K2 High-power LEDs emitting countless numbers of rich and saturated colour-hues. MODULED 150 FULL COLOUR, also a RGB colour mixing luminaire, provided with the new multi-chip High-power LED source. MODULED 150 AWW, is an intelligent white luminaire, combining both cold white and amber LEDs sources which offers a colour temperature range from 2 800K to 6 500K. MODULED 150 AWB, intelligent white luminaire as well, comes with an extended range of colour temperature from 2 800K to 9 500K.

MODULED 150 can be addressed and set up via its built-in front-side control panel or through the new COUGAR 2 optional remote controller, when connected to the projector through the DMX line. MODULED 150 main benefits is the ability to be used individually or in pairs thus creating ramps and wall-shapes. MODULED 150 optional filters broaden up the utilizations of this versatile device. The AYRTON dedicated cables merge power and signal connections, making visual installations smart, neat and tidy. MODULED 150 is designed for both indoor and outdoor use. It's a multi-faceted luminaire perfect for large show events, conventions and architectural applications.

- Beam aperture: 11° (RGB, AWW & AWB) or 19° (FULL COLOR)
- Optional optic filters: up to 44° spot beam angle, up to 63° X 22° elliptic beam angle
- Light output: up to 3 600 lumens, depending on models
- Colour mixing: RGB, AWW or AWW, depending on models
- Colour depth: 16.7 million (RGB, AWB & FULL COLOR) or 65 536 (AWW)
- Control by DMX 512 protocol (USITT, 1990)
- Electronic dimmer for adjustment of light output from 0 to 100% with no colour variation
- High-speed strobe effect with 1-25 fps flash rate
- Software facilities access via COUGAR 2 handy-pocket size controller (optional)
- Built-in thermal protection system
- Housing: die-cast aluminium with tempered glass
- Fixation: yoke with removable coupling
- Side coupling for luminaire line-up installation

More technical specifications on page 45





IP 65 protection rating (Indoor/Outdoor use)





# arcaline

## ARCALINE 50 & 100 LED STATIC LUMINAIRE

ARCALINE LED static luminaire is the ultimate linear range evolution of AYRTON creations using the new LUMILED LUXEON K2 High-Power LEDs as its light-source. With a stunning smooth and sophisticated profile, the ARCALINE LEDs range is meant for any kind of steady applications. ARCALINE introduces 12 versions, blending two distinct Carbon or Platinum structure colours, two sizes 18 or 36 LEDs, with RGB, AWW or AWB light sources. Improving the linear luminaire suite, ARCALINE can be directly powered through its own on-board power supply unit. ARCALINE thus gives an incredible utilization pliancy in any condition requirements.

- Beam aperture: 11°
- Optional optic filters: 13° spot beam angle, up to 33° X 13° elliptic beam angle
- Light output: up to 2 400 lumens, depending on models
- Colour mixing: RGB, AWB or AWW depending on models
- Colour depth: 16.7 million (RGB, AWB) or 65 536 (AWW)
- Control by DMX 512 protocol (USITT, 1990)
- Electronic dimmer for adjustment of light output from 0 to 100% with no colour variation
- High-speed strobe effect with 1-25 fps flash rate
- Software facilities access via COUGAR 2 handy-pocket size controller (optional)
- Built-in thermal protection system
- Housing: die-cast aluminium and extruded anodized aluminium profile with tempered glass
- Fixation: 2 multi-positioning brackets sliding inside 3 rails

More technical specifications on pages 45 & 46

ARCALINE RGB colour mixing luminaire emits unlimited choices of rich and saturated colour-hues. ARCALINE AWW & AWB are intelligent white luminaires. The colour temperature range stands for their differentiation: AWW, mixing cold white and amber, reaches a scale from 2 800K to 6 500K, while AWB, with a cold white, amber and blue LEDs mix, offers an adjustable colour temperature from 2 800K to 9 500K. The ARCALINE range can be addressed and set-up through the new COUGAR 2 handy-pocket-size controller. The ARCALINE highly innovative series, perfectly matches with any surrounding environment, and offers both indoor and outdoor possibilities along with a wide range of scheme solutions. ARCALINE is the ideal fixture for all architectural illumination as well as show-venues, TV-stages or Exhibition applications.





IP 67 protection rating (Indoor/Outdoor use)





# Streetline

## STREETLINE 50 & 100 LED STATIC LUMINAIRE

STREETLINE LED static luminaire is the urban linear range evolution of AYRTON creations using LUXEON K2 High-Power LEDs as its light-source. With a sharp profile, the STREETLINE LEDs range is meant for any kind of intensive recessed applications. STREETLINE introduces 3 LEDs source versions. STREETLINE RGB is a colour mixing luminaire emitting numerous choices of rich and saturated colour-hues. STREETLINE AWW, an intelligent white luminaire, is blending cold white and amber LEDs to achieve a colour temperature range from 2 800K to 6 500K, while STREETLINE AWB offers an extended colour temperature range from 2 800K to 9 500K with white, amber and blue LEDs mix.

Increasing the urban linear luminaire assets, STREETLINE can be directly powered through its own on-board power supply unit. Coming with 18 or 36 High-power LEDs, STREETLINE 50 or STREETLINE 100 allow different brightness and size options. It also offers both indoor and outdoor **deeply resistant** possibilities, according to the surrounding environment. All STREETLINE luminaire are to be addressed, set up and upgraded through the new COUGAR 2 handy-pocket size controller (optional). Built-in thermal protection system. Housing: extruded and die-cast aluminium. Front cover: stainless steel with tempered glass. Supplied with plastic inlay case.

- Beam aperture: 11°
- Optional optic filters: 13° spot beam angle, up to 33° X 13° elliptic beam angle
- Light output: up to 2 400 lumens, depending on models
- Colour mixing: RGB, AWB or AWW depending on models
- Colour depth: 16.7 million (RGB, AWB) or 65 536 (AWW)
- Control by DMX 512 protocol (USITT, 1990)
- Electronic dimmer for adjustment of light output from 0 to 100% with no colour variation
- High-speed strobe effect with 1-25 fps flash rate
- Software facilities access via COUGAR 2 handy-pocket size controller (optional)
- Built-in thermal protection system
- Housing: extruded and die-cast aluminium
- Front cover: stainless steel with tempered glass
- Supplied with plastic inlay case

More technical specifications on pages 46 & 47





**EyeFloor**

## EYEFLOOR 50 LED STATIC LUMINAIRE

EYEFLOOR 50 is a compact floor recessed LED colour changer designed for both indoor and outdoor applications, integrating 18 LUXEON K2 High-power LEDs on two versions. EYEFLOOR 50 RGB reaching countless number of rich and saturated colour-hues, while EYEFLOOR 50 AWW remains as an intelligent white projector that combines cold white and amber LEDs to offer a colour temperature range from 2 800K to 6 500K. The use of interchangeable optic filters permits to switch the beam angle according to the application demands.

The powerful brightness and the compact size of the EYEFLOOR 50 enable the utilization of an external intelligent power supply: INTELLIPOWER 150, controlling up to three identical devices.

The high quality of the luminaire's housing and the long-living LED source, make the EYEFLOOR 50 a solid product with a low level of maintenance. EYEFLOOR 50 is the ideal environmental luminaire designed for architectural installations when discrete floor inlay is crucial.

- Beam aperture: 11°
- Optional optic filters: 24°, 33° or 42°
- Light output: up to 1 200 lumens, depending on models
- Colour mixing: RGB or AWW, depending on models
- Colour depth: 16.7 million (RGB) or 65 536 (AWW)
- Control by DMX 512 protocol (USITT, 1990) via INTELLIPOWER 150
- Electronic dimmer for adjustment of light output from 0 to 100% with no colour variation
- High-speed strobe effect with 1-25 fps flash rate
- Fixture addressing & parameter settings access via INTELLIPOWER 150
- Built-in temperature protection sensor
- Housing: die-cast aluminium
- Front cover: stainless steel ring with tempered glass
- Supplied with plastic inlay case

More technical specifications on page 47

IP 67 protection rating (Indoor/Outdoor use)







## EYSEEA 50 LED STATIC LUMINAIRE

EYSEEA 50 is a space-saving luminaire for water-based applications. Equipped with 18 LUXEON K2 High-power LEDs, it comes in two versions. EYSEEA 50 RGB offers an unlimited palette of rich saturated colours-hues and EYSEEA 50 AWW that remains a white and amber mixing LEDs source to establish a colour temperature scale from 2 800K to 6 500K. Along with exchangeable optional optic filters which authorize a wide range of sealed-off implementations, the powerful brightness and compact size of the EYSEEA 50 enable the use of the external intelligent power supply: INTELLIPOWER 150, operating three equivalent devices.

Available in recessed version (SX) or equipped with bracket-based (SXB), the high quality of the luminaire's housing and the long LED life expectancy make the EYSEEA 50 the most reliable with low level of maintenance fixture. EYSEEA 50 is the ideal tool for all underwater decoration and any architectural illumination, as fountains and pools.

- Beam aperture: 11°
- Optional optics filters: 24°, 33° or 42°
- Light output: up to 1 200 lumens, depending on models
- Colour mixing: RGB or AWW, depending on models
- Colour depth: 16.7 million (RGB) or 65 536 (AWW)
- Control by DMX 512 protocol (USITT, 1990) via INTELLIPOWER 150
- Electronic dimmer for adjustment of light output from 0 to 100% with no colour variation
- High-speed strobe effect with 1-25 fps flash rate
- Fixture addressing & parameter settings access via INTELLIPOWER 150
- Built-in temperature protection sensor
- Housing: die-cast stainless steel
- Front cover: stainless steel ring with tempered glass
- Supplied with plastic inlay case (SX version)

More technical specifications on page 47

IP 68 protection rating (Submersible use up to 5m)





# intelliPower

## INTELLIPOWER 150 INTELLIGENT POWER SUPPLY

INTELLIPOWER 150 is an intelligent electronic power supply planned for EYEFLOOR 50 and EYSEA 50 luminaires control. Each power supply unit can run up to three different fixtures individually or altogether. The luminaires control is accomplished through the communication standard protocol DMX 512 USITT (1990). INTELLIPOWER 150 developed by AYRTON, integrates an active PFC and authorizes a universal implementation and an optimized LED management whatever would be the power supply voltage.

- Electronic dimmer for adjustment of light output from 0 to 100% with no colour variation
- High-speed strobe effect with 1-25 fps flash rate
- Software facilities access via DMX 512 protocol
- Up to 12 DMX 512 channels depending on the selected function
- Input/output data connector: screw terminals
- Input voltage: 110-230V AC, 50-60Hz
- Output voltage: 24V DC
- Maximum power consumption: 150VA
- Input/output power connector: screw terminals
- Cooling system: natural air-flow
- Housing: die-cast aluminium

Internally equipped with a 4-LEDs digital control panel and a LED screen for the information's view, INTELLIPOWER 150 can be set with the correct parameters in compliance with the type of luminaire employed and the user's requests. INTELLIPOWER 150 can also be addressed and set up through the optional distant controller COUGAR 2, when connected to the DMX line. A permanent temperature surveillance system is integrated to let the fixture's power adaptation and to **guarantee** its functioning whatever could be the use conditions. INTELLIPOWER 150 has been designed and strongly built for any indoor or outdoor use.

IP 67 protection rating (Indoor/Outdoor use)







## COUGAR 2 INTELLIGENT POCKET CONTROLLER

The intelligent handy-pocket-size COUGAR 2 controller is the universal communication tool for the whole AYRTON LED STATIC LUMINAIRE & LED MOVING HEAD LUMINAIRE products range. It allows fixture addressing, parameter settings, control and software update of distant connected projectors through a DMX line. COUGAR 2 may either autonomously operate, or be linked to a PC via a USB port to ensure an increased utilization convenience.

- Fixture addressing & parameter settings for all AYRTON Luminaires
- Fixture internal program control
- Fixture test
- Fixture software update
- 128 X 64 blue back-lit LCD to display functions
- Touch-pad for setting functions
- RJ-45 port for RS-485 fixture communication
- USB port for PC connexion and battery charge
- Housing: ABS
- Supplied with RJ45 to XLR-3 DMX adapter cable, USB cable for PC communication, external power supply and Leather case

A touchpad permits menu navigations with a LCD blue-back-lighted graphic screen to let the information visualization. Equipped with an integrated lithium battery, securing 4 hours power autonomy, COUGAR 2 is delivered with a USB main current charger, a USB cable for PC connexion, a DMX 512 adapter cable with RJ45 & XLR 3 and a leather case.

IP 20 protection rating (Indoor use only)







# LED MOVING HEAD LUMINAIRE

The AYRTON history started in 2002 with the first professional LED luminaire developed for the lighting industry. Since its introduction and despite a limited power, EYECOLOR was highly successful within numerous applications.

The pro-active Research & Development and heavy LED manufacturer competition highly increase the LED efficiency, allowing AYRTON to propose a major evolution of its LED head-moving luminaire range. With a tripled light output compared to the previous generation models, new applications are opened to the EASYCOLOR range. From now on, these spotlights may definitely replace the classical light sources.



The EASYCOLOR range originally available in RGB only, is now coming with two added versions. EASYCOLOR 50 & 100 FULL COLOR, also RGB colour changing luminaire but equipped with High-power

multi-chip LEDs, generate a perfect uniform light beam and weaken multicoloured point sources or shadows. EASYCOLOR 50 & 100 AWW are intelligent white fixtures, merging white and amber High-power LUXEON K2 LEDs, to reach a temperature range from 2 800K to 6 500K.

Lots of AYRTON productions have often been copied, especially LED head-moving luminaire. These items are based upon our design but are far from implementing our technology. AYRTON philosophy and choices are to propose innovative solutions designed for demanding professionals, who give preference to efficiency and quality.



IP 20 protection rating (Indoor use only)



26





# easyColor<sub>50</sub>

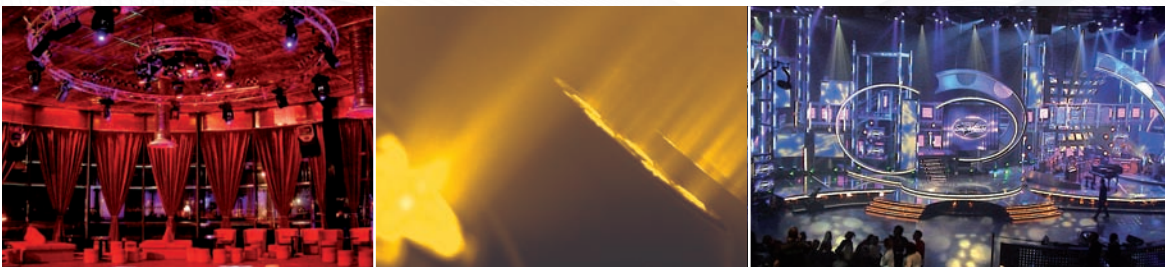
## EASYCOLOR 50 LED MOVING-HEAD LUMINAIRE

EASYCOLOR 50 is the last evolution of the compact LED moving-head fixture EASYCOLOR, Equipped with 18 High-power LEDs, EASYCOLOR 50 exists in three versions. EASYCOLOR 50 RGB colour mixing fixture using LUXEON K2 High-power LEDs sources emits unlimited rich and saturated colour-hues. EASYCOLOR 50 FULL COLOUR, also a RGB luminaire, provided with the Full Color technology creates a constant light output without multicoloured point sources or shadows. An intelligent white solution, EASYCOLOR 50 AWW, combines cold white and amber LUXEON K2 High-power LEDs sources, and offers a scale of colour temperature from 2 800K to 6 500K, depending on the environment requirements.

EASYCOLOR 50 series uses the last mechanical structure and stronger motors to ensure with 8 or 16 bit resolution control, the fastest and most accurate movements. Optional filters fulfil most users requirements, with easy-to-switch tools to adapt the luminaire as well as the fixture addressing & parameter, and are easily set via the control panel on the LED moving-head luminaire backside. EASYCOLOR 50, IP20 rated for indoor use, along with its evenly round design is the perfect and compact projector needed in shops, bars, boutiques and decoration application where a precise and sober lighting is required.

- Beam aperture: 12° (RGB & AWW) or 20° (FULL COLOR)
- Optional optic filters: 24°, 33°, 42° (RGB & AWW), 28°, 36°, 44° (FULL COLOR)
- Movements: 650° (Pan), 280° (Tilt) with automatic repositioning
- Light output: up to 1 200 lumens, depending on models
- Colour mixing: RGB or AWW, depending on models
- Colour depth: 16.7 million (RGB & FULL COLOR) or 65 536 (AWW)
- Control by DMX 512 protocol (USITT, 1990)
- Electronic dimmer for adjustment of light output from 0 to 100% with no colour variation
- High-speed strobe effect with 1-25 fps flash rate
- Software facilities access via COUGAR 2 handy-pocket size controller (optional)
- Built-in thermal protection system
- Housing: self-extinguishing V0 class fire-retardant ABS PC moulded covers
- Structure: aluminium and steel plates
- Fixation: two omega quarter turn bracket

More technical specifications on page 48







IP 20 protection rating (Indoor use only)





# easyColor<sub>100</sub>

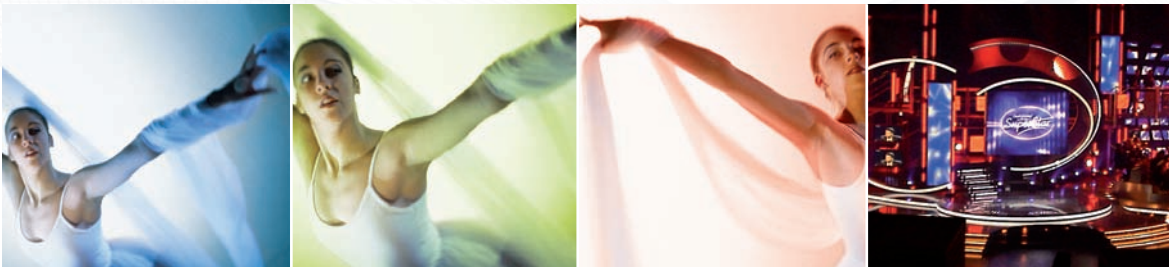
## EASYCOLOR 100 LED MOVING-HEAD LUMINAIRE

EASYCOLOR 100 is the ultimate evolution of the professional led moving-head fixture EASYCOLOR 2. Using 36 High-power LEDs, EASYCOLOR 100 is available in three versions. EASYCOLOR 100 RGB equipped with LUXEON K2 High-power LEDs emitting countless numbers of rich and saturated colour-hues. EASYCOLOR 100 FULL COLOR, also a RGB colour mixing luminaire, delivered with the new multi-chip High-power LED source, generates a **perfect** uniform light beam, without multicoloured point sources or shadows. EASYCOLOR 100 AWW, intelligent white evolution combining both cold white and amber LUXEON K2 High-power LEDs sources, offers a colour temperature range from 2 800K to 6 500K, according to the environment requirements.

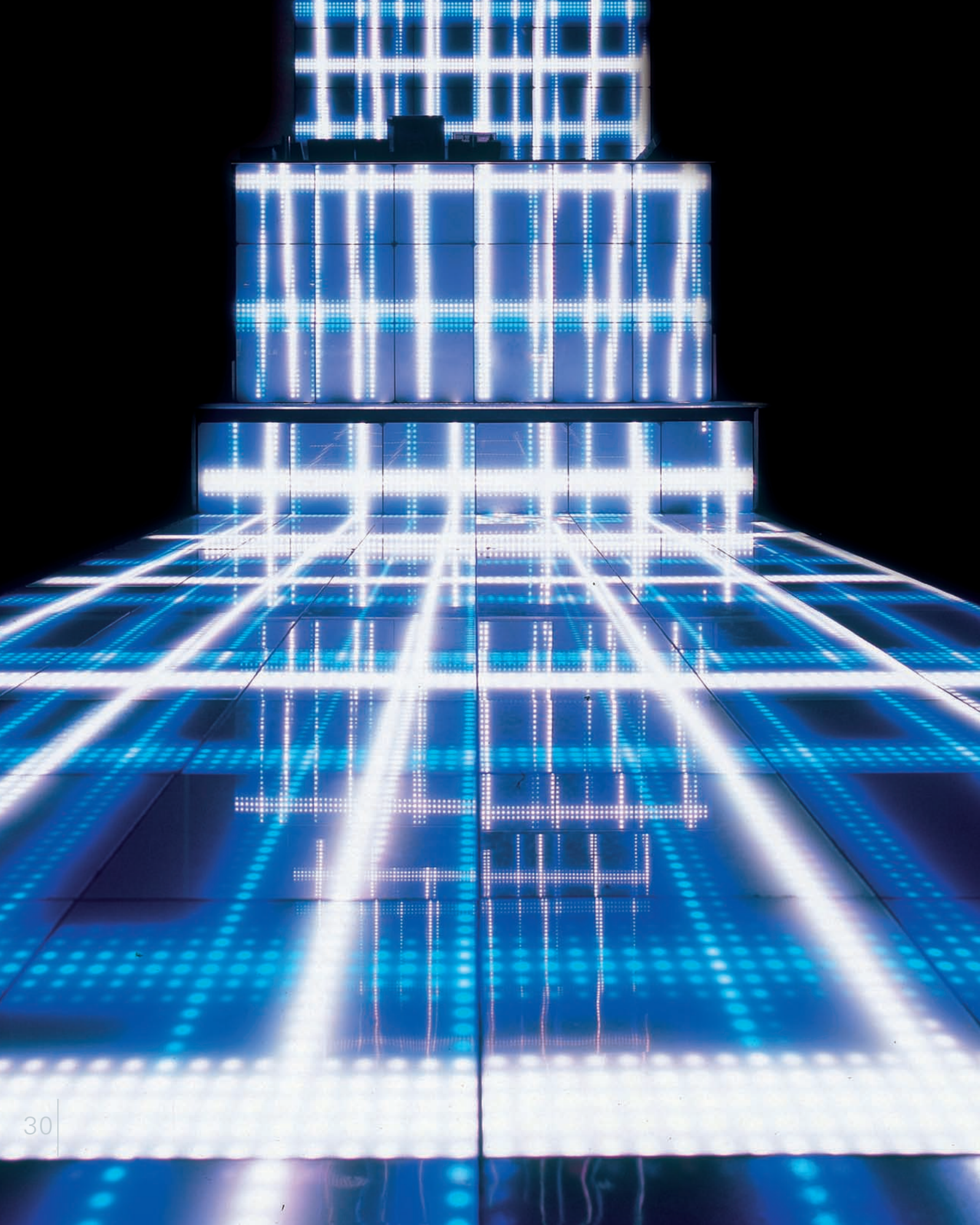
Fast exchange, no-tools optional filters, may be provided to adapt the luminaire to most user demands. EASYCOLOR 100 includes the ultimate mechanical structure and stronger motors that ensure the quickest and most **accurate** movements, with 8 or 16 bit resolution control. Fixture addressing & parameter settings are accessible through the built-in control panel located on the backside of the LED moving-head luminaire. EASYCOLOR 100 is an authentic substitute to traditional colour changer moving-head, enforcing all LED projector assets. Its dazzling power makes the EASYCOLOR 100 the perfect solution for unlimited type of events, conventions, TV-studios and architectural applications.

- Beam aperture: 12° (RGB & AWW) or 20° (FULL COLOR)
- Optional optic filters: 24°, 33°, 42° (RGB & AWW), 28°, 36°, 44° (FULL COLOR)
- Movements: 630° (Pan), 270° (Tilt) with automatic repositioning
- Light output: up to 2 400 lumens, depending on models
- Colour mixing: RGB or AWW depending on models
- Colour depth: 16.7 million (RGB & FULL COLOR) or 65 536 (AWW)
- Control by DMX 512 protocol (USITT, 1990)
- Electronic dimmer for adjustment of light output from 0 to 100% with no colour variation
- High-speed strobe effect with 1-25 fps flash rate
- Software facilities access via COUGAR 2 handy-pocket size controller (optional)
- Built-in thermal protection system
- Housing: self-extinguishing V0 class fire-retardant ABS PC moulded covers
- Structure: aluminium and steel plates
- Fixation: two omega quarter turn bracket

More technical specifications on page 48









# LED IMAGING DISPLAY

AYRTON created in 2005 the DREAMPANEL FLOOR 256, which is specifically planned to sustain heavy loads without any video-screen distortion, thanks to its patented modular video tile internal structure. This is the very first step on long creation period of video-products, designed for shows and architectural applications.

AYRTON kept on investing in modular LEDs screens ever since, and has widened up the range to match with multiple applications. Some are particularly meant for show special effects, some are more static or architecture-oriented. A part of the range is designed for indoor use, while others allow a mixed indoor and outdoor use.

The LED and sensible components choices remain essential for the final product performance. This is the reason why AYRTON integrates acknowledged and highly innovative elements only. The CMS LEDs technology applied by AYRTON,

lets a precise components mapping and offers a perfect vision angle even from short distance. Each pixel calibration guarantees uniform colours all over the canvas.

AYRTON has deliberately chosen top-level standards for its products, targeting the professional industries only. The DREAMPANEL range quality, high level of brightness, easy-setup and simplicity of use, let AYRTON to be unanimously renowned for numerous applications in the modular screen LEDs industry.





IP 21 protection rating (Indoor use only)





# dreampanel

Wall 64

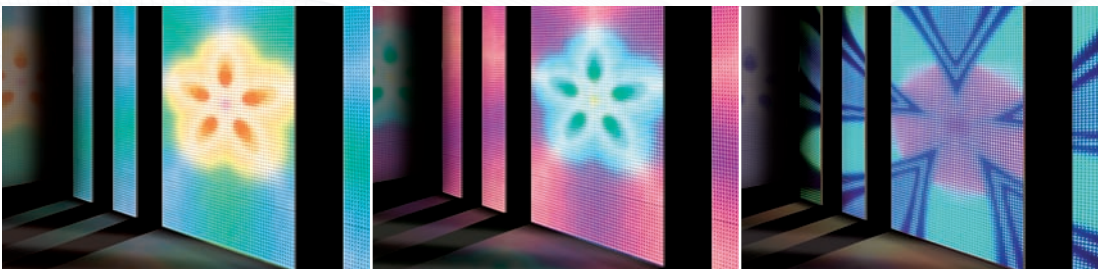
## DREAMPANEL WALL 64 LED IMAGING DISPLAY

DREAMPANEL WALL 64 is a compact 25 X 25 cm modular video-tile designed for architectural wall-based solutions. Intentionally conceived for permanent installations, each and every DREAMPANEL WALL 64 tile is a part of a construction game, allowing all geometric screen frames without any design creation limit so as to enhance architectural applications. Meant for widespread diffused graphic-animations, DREAMPANEL WALL 64 gives a stunning video-rendering image when the screen dimension is adequate. Autonomously powered thanks to its dedicated connectors, the DREAMPANEL WALL 64 resolution enables panel constructions of 32 X 24 m spread over a total of 768 m<sup>2</sup>.

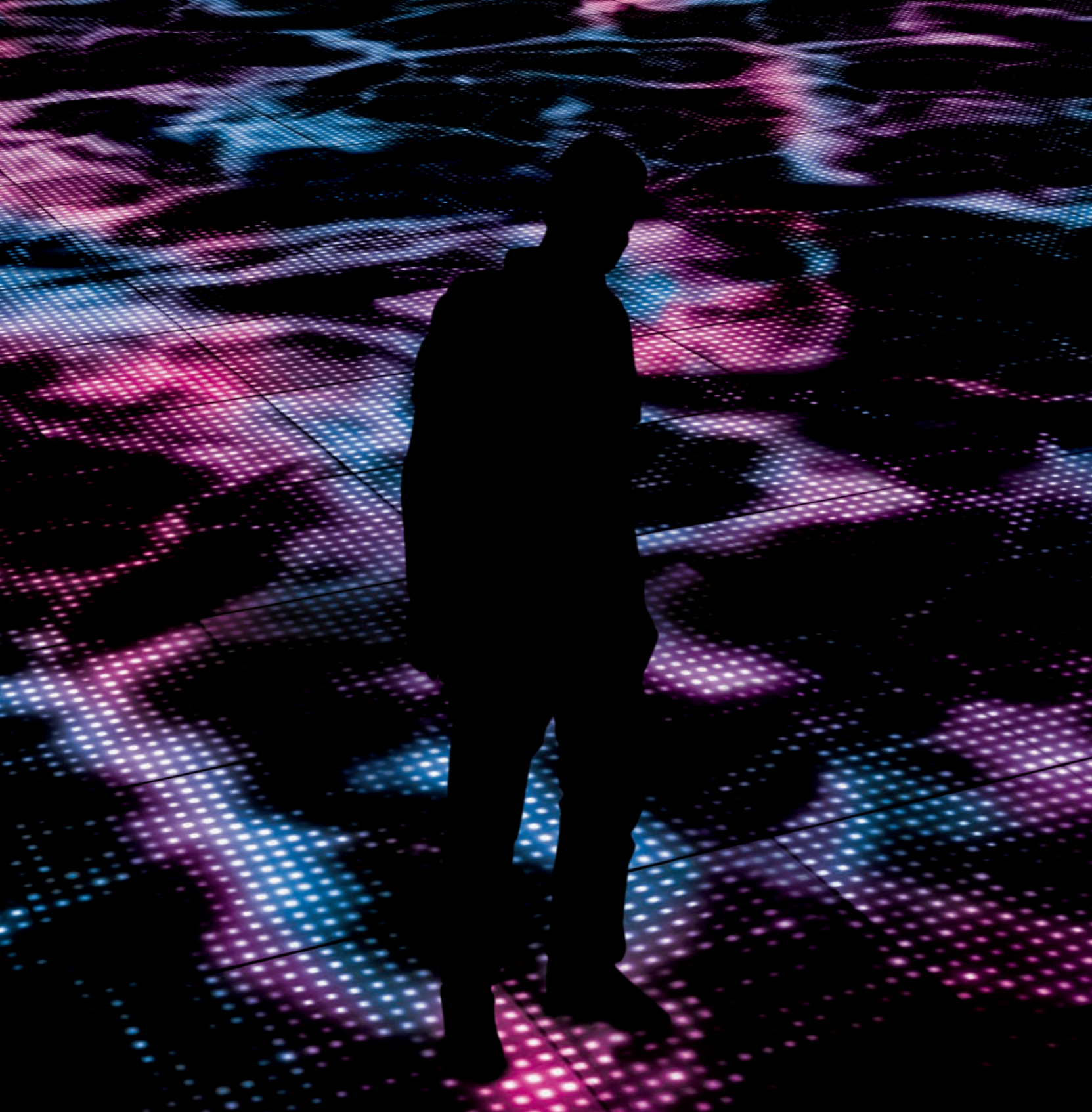
The system allows a global vision of the screen with a colour calibration of each pixel that achieves a perfect colour balance of the entire canvas. The DREAMPANEL MANAGER software permits geometric screen and panel address configuration. The system is fully compatible with all media-server with scale-downed image size (scaling mode) and image rotation capabilities via DREAMPANEL DV-384. Available in Snow and Carbon colour, along with its effortless-to-set-up aluminium frame provided, the wall mounting system allows the DREAMPANEL WALL 64 to be easily settled in all architectural fixed and permanent but still yielding illumination installations.

- Viewing angle: 105°
- Pixel pitch (mm): 31,25
- Panel pixel population: 64
- Pixel population per m<sup>2</sup>: 1 024
- Brightness (nit or cd/m<sup>2</sup>): 2 850
- Maximum image resolution (pixels): 1 024 X 768
- Maximum screen dimensions (m): 32 X 24
- Maximum panel system: 12 288
- Colour depth: 16.7 million
- Internal colour control: 14 bit
- Software facilities access via DREAMPANEL DV-384 controller
- DVI & VGA video format ingress via DREAMPANEL DV-384 controller
- Housing: self-extinguishing V0 class fire-retardant ABS PC
- Front cover: V0 class ABS PC integrating 64 clear lenses
- Supplied with aluminium frame, power cable & RJ-45 data cable

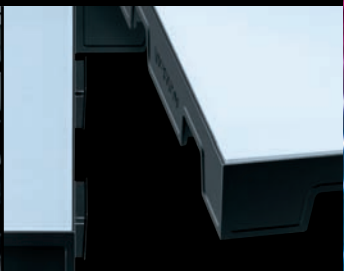
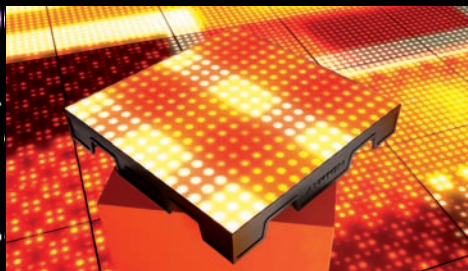
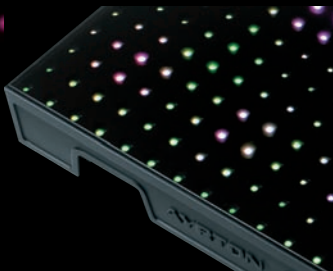
More technical specifications on page 49







IP 21 protection rating (Strictly for indoor use only)





# dreampanel

Floor 256

## DREAMPANEL FLOOR 256 LED IMAGING DISPLAY

DREAMPANEL FLOOR 256 is a 50 X 50 cm modular video-tile designed for screen-floor applications. The internal structure of the DREAMPANEL is specifically conceived to sustain heavy loads on the tile without distortion on the projected image presentation (Patented system: Pat. FR 0503355, Pat. pending WO 2006/106194). The exclusive 170° viewing angle of DREAMPANEL FLOOR 256 allows a global vision of the screen. Invented for diffused graphic-animations, DREAMPANEL FLOOR 256 gives a stunning video-rendering image with wide screen. The system resolution enables panel constructions of 32 X 24 m spread over a total of 768 m<sup>2</sup>.

The AYRTON dedicated cables merge power and data signal underneath the video-tile, keeping the wiring invisible. The colour calibration of each pixel achieves a perfect colour and white balance of the entire canvas. The control system of the DREAMPANEL FLOOR 256 can operate each individual tile as a portion of the standard-video screen. DREAMPANEL MANAGER software generates geometric display and panel address configuration. The DREAMPANEL system is fully compatible with all media-server with scale-downed image size (scaling mode) and image rotation capabilities. Due to its innovative concept, DREAMPANEL FLOOR 256 is the ideal tool for both temporary and permanent installations, TV-Studios, Concerts, Exhibition & Convention halls, Theme parks and any indoor entertainment applications.

- Viewing angle: 170°
- Pixel pitch (mm): 31,25
- Panel pixel population: 256
- Pixel population per m<sup>2</sup>: 1 024
- Brightness (nit or cd/m<sup>2</sup>): 2 700
- Maximum image resolution (pixels): 1 024 X 768
- Maximum screen dimensions (m): 32 X 24
- Maximum panel system: 3 072
- Colour depth: 16.7 million
- Internal colour control: 14 bit
- Software facilities access via DREAMPANEL DV-384 controller.
- DVI & VGA video format ingress via DREAMPANEL DV-384 controller
- Housing: self-extinguishing V0 class fire-retardant ABS PC
- Front cover: two-layer-tempered-laminated glass of 6 mm thickness and plastic film (butyral-polyvinyl)
- Total load charge spread per panel: 320 kg (1 280 kg per m<sup>2</sup>)
- Multiple panel mount using free-U-shaped plastic bridge

More technical specifications on page 49







IP 65 protection rating (Indoor/Outdoor use)





# dreampanel

Screen 256

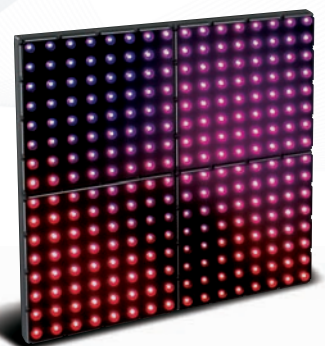
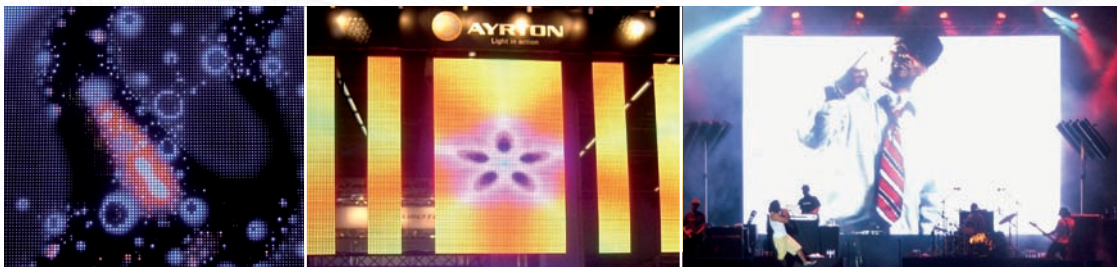
## DREAMPANEL SCREEN 256 LED IMAGING DISPLAY

DREAMPANEL SCREEN 256 is a 50 X 50 cm modular video product, which shares integrated characteristics with the DREAMPANEL FLOOR 256. The dedicated installation kit designed for DREAMPANEL SCREEN 256 allows fast construction and installation of suspended screens. Very flexible and ready for indoor and outdoor applications, DREAMPANEL SCREEN 256 has a maximum construction size of 32 X 8 m. Thanks to its lightweight (32 Kg per m<sup>2</sup> including installation kit) and its aesthetic body shape, DREAMPANEL SCREEN 256 is the ideal tool for ready-to-go-mount-dismount set up. The AYRTON dedicated cables merge power and signal connections and make visual installations smart, neat and tidy.

DREAMPANEL SCREEN 256 is designed to display graphic and animated video effects, giving an outstanding video-rendering image when the screen dimension is adequate. The colour calibration of each pixel reaches a perfect display uniformity. The control system of the DREAMPANEL SCREEN 256 can operate each individual tile as a portion of the standard-video screen. DREAMPANEL MANAGER software generates geometric display and panel address configuration. The DREAMPANEL system is fully compatible with all media-server with scale-downed image size (scaling mode) and image rotation capabilities. DREAMPANEL SCREEN 256 is definitely ideal for TV-Studios, Concerts, Exhibitions & Convention halls, Theme parks and any other entertainment applications.

- Viewing angle: 115°
- Pixel pitch (mm): 31,25
- Panel pixel population: 256
- Pixel population per m<sup>2</sup>: 1 024
- Brightness (nit or cd/m<sup>2</sup>): 2 850
- Maximum image resolution (pixels): 1 024 X 768
- Maximum height construction (m): 8
- Maximum panel system: 1 024
- Colour depth: 16.7 million
- Internal colour control: 14 bit
- Software options accessed via DREAMPANEL DV-384 controller
- DVI & VGA video format ingress via DREAMPANEL DV-384 controller
- Housing: self-extinguishing V0 class fire-retardant ABS PC
- Front cover: V0 class PC
- Outdoor use with zero wind
- Suspension kit for rapid panel installation (optional)

More technical specifications on page 49







IP 65 protection rating (Indoor/Outdoor use)





# dreampanel

Archi 256 & 1024

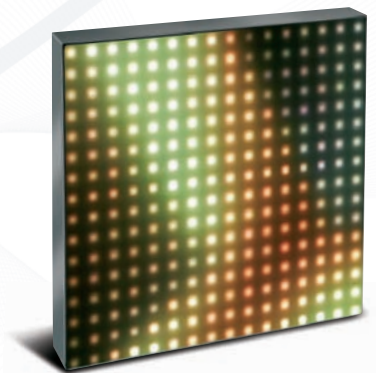
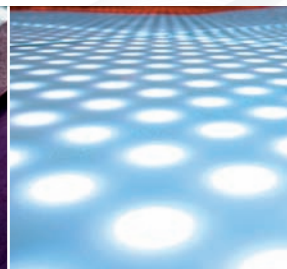
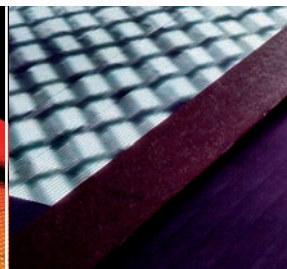
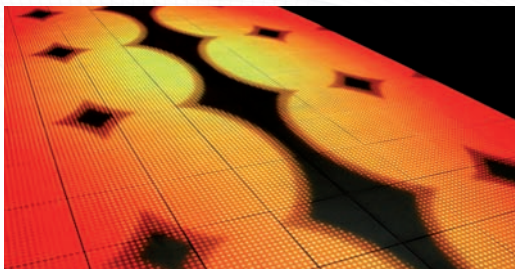
## DREAMPANEL ARCHI 256 & 1024 LED IMAGING DISPLAY

The brand new DREAMPANEL ARCHI 256 & 1024 are particularly designed to fit in all screen floor realization in the architectural sphere. Available in two versions, 50 X 50 cm for DREAMPANEL ARCHI 256, or 100 X 100 cm for DREAMPANEL ARCHI 1024, they are both prepared for demanding sealed off use. Moreover, the DREAMPANEL ARCHI 256 & 1024 internal structure, made of extruded aluminium is conceived to sustain heavy loads on the tile without any quality alteration of the projected image. Thanks to their lightweight (48 Kg per m<sup>2</sup>) and aesthetic body-shape, they are the ideal tools for ready-to-go-mount-dismount set up.

The exclusive 170° viewing angle of DREAMPANEL ARCHI 256 & 1024 allows a global vision of the screen. The system resolution enables panel constructions of 32 X 24 m spread over a total of 768 m<sup>2</sup>. The AYRTON dedicated cables merge power and data signal underneath the video-tile, keeping the wiring invisible. The colour calibration of each pixel achieves a perfect colour and white balance of the entire canvas. The DREAMPANEL system is fully compatible with all media-server with scale-downed image size (scaling mode) and image rotation capabilities. Mainly designed for architectural applications, they also might be used for both temporary and permanent installations, TV-Studios, Concerts, Theme parks and other entertainment applications.

- Viewing Angle: 170°
- Pixel pitch (mm): 31,25
- Panel pixel population: 256 or 1024 depending on models
- Pixel population per m<sup>2</sup>: 1 024
- Brightness (nit or cd/m<sup>2</sup>): 2 700
- Maximum image resolution (pixels): 1 024 X 768
- Maximum screen dimensions (m): 32 X 24
- Maximum panel system: 768 (model 1 024) or 3 072 (model 256)
- Colour depth: 16.7 million
- Internal colour control: 14 bit
- Software facilities access via DREAMPANEL DV-384 controller
- DVI & VGA video format ingress via DREAMPANEL DV-384 controller
- Housing: extruded anodized aluminium profile
- Front cover: two-layer-tempered-laminated glass of 6 mm thickness and plastic film (butyral-polyvinyl)
- Total load charge spread per m<sup>2</sup>: 1 280 kg

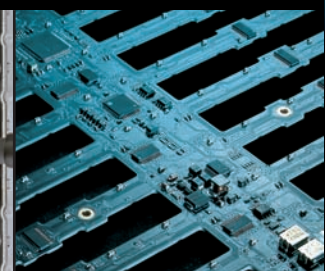
More technical specifications on page 49







IP 65 protection rating (Indoor/Outdoor use)





# dreampanel

Ghost 256

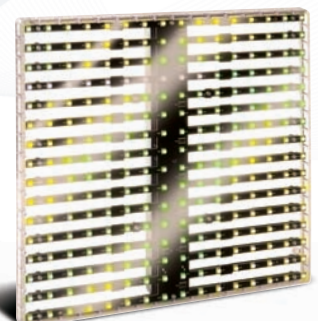
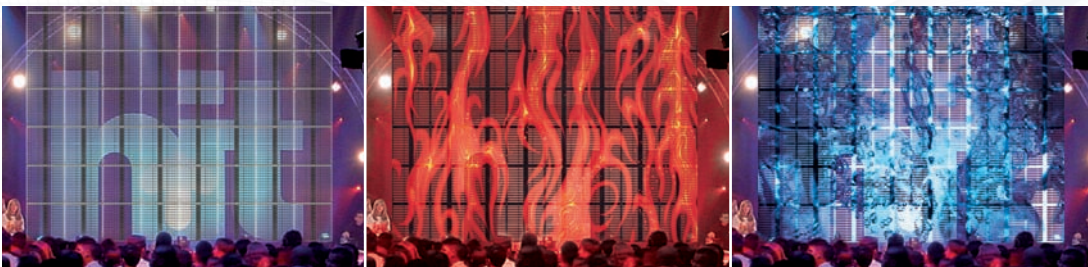
## DREAMPANEL GHOST 256 LED IMAGING DISPLAY

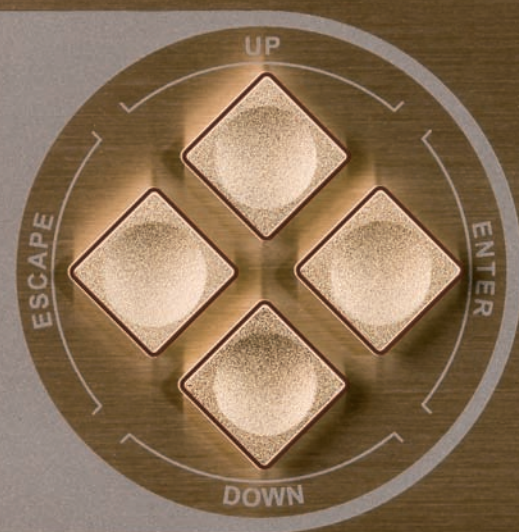
The new modular LED imaging display DREAMPANEL GHOST 256 is the ultimate evolution of the DREAMPANEL range. Provided with a high resolution of 1 820 pixels per m<sup>2</sup>, 23,44 mm pixel pitch, 5 100 nit brightness and a transparency over 50%, DREAMPANEL GHOST 256 offers a new standard of performance in the screen segment dedicated to special effect creations. The 37,5 X 37,5 cm body shape in PC V0 class of the DREAMPANEL GHOST 256 combines strength and an outstanding level of transparency. Robust, lightweight and easy to install, the DREAMPANEL GHOST 256 has been designed for both indoor and outdoor use. The optional framework designed for the DREAMPANEL GHOST 256 consents fast construction and installation of suspended screens.

- Viewing angle: 150°
- Pixel pitch (mm): 23,44
- Panel pixel population: 256
- Pixel population per m<sup>2</sup>: 1 820
- Brightness (nit or cd/m<sup>2</sup>): 5 100
- Maximum image resolution (pixels): 1 024 X 768
- Maximum height construction (m): 9
- Maximum panel system: 1 536
- Colour depth: 16.7 million
- Internal colour control: 14 bit
- Software facilities access via DREAMPANEL DV-384 controller
- DVI & VGA video format ingress via DREAMPANEL DV-384 controller
- Housing: V0 class PC
- Front cover: V0 class PC
- Outdoor use with zero wind
- Optional framework kit for rapid panel installation

More technical specifications on page 49

The maximum construction size of the panel is of 24 X 9 m. The AYRTON dedicated cables facilitate power and data connections and make visual installations smart, neat and tidy. The colour calibration of each pixel achieves a perfect colour evenness of the entire panel. The DREAMPANEL MANAGER software permits geometric screen and panel address configuration. The DREAMPANEL system is fully compatible with all media-server with scale-downed image size (scaling mode) and image rotation capabilities. DREAMPANEL GHOST 256 is the ideal gear for both temporary and permanent entertainment applications, TV-Studios, Trade Shows, Theme parks, and Architectural installations.





# dreampanel

DV-384

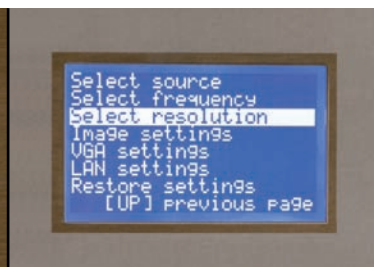
## DREAMPANEL DV-384 DIGITAL VIDEO CONTROLLER

DREAMPANEL DV-384 digital video controller is the Heart-Beating element of the AYRTON "LED IMAGING DISPLAY" range. It allows the DREAMPANEL family control and setup and gets the video signal to feed the entire system according to the screen mapping wished. The DREAMPANEL DV-384 advanced management system gathers all the screen settings without any individual tile parameter configuration. The DREAMPANEL DV-384 is laid out with USB and ETHERNET ports, coming up on the device's front-side, allowing a PC connexion for its parameter settings.

The AYRTON DREAMPANEL MANAGER software, PC compatible, permits the DREAMPANEL system settings and the easy remote update of the DV-384 as well as any other tile of the range. DREAMPANEL DV-384 controllers can be connected to each other to operate DREAMPANEL screens up to a dimension of 32 X 24 m, depending on the type of DREAMPANEL tile used. The DREAMPANEL DV-384 digital video controller is fully compatible with all media-server systems featuring DVI-D or VGA video output, scale-downed image size (scaling mode) and image rotation capabilities.

- Video input/output: DVI-D or VGA format
- Video input resolution range: VGA (640 X 480), SVGA (800 X 600), XGA (1 024 X 768)
- Refresh rate : 60 Hz, 75 Hz or 85 Hz
- Maximum panel control:
  - DREAMPANEL WALL 64: up to 1536
  - DREAMPANEL FLOOR 256: up to 384
  - DREAMPANEL SCREEN 256: up to 384
  - DREAMPANEL ARCHI 256: up to 384
  - DREAMPANEL ARCHI 1024: up to 96
  - DREAMPANEL GHOST 256: up to 384
- 4 menu buttons for setting functions
- 128 X 64 blue back-lit LCD to display functions
- Input/output video connector: DVI-D (DVI) or Sub-D 15 HD (VGA)
- Distribution output connector: 12 X Sub-D 15
- USB and ETHERNET ports for PC connexion
- Housing: rack 19" - 2U with anodised aluminium front panel

IP 20 protection rating (Indoor use only)





# dreampanel

Distribution Rack

## DREAMPANEL PX-32, PSX-32 & DX-384 DISTRIBUTION RACK

### DREAMPANEL PX-32

- Compatibility: DREAMPANEL FLOOR 256 or DREAMPANEL SCREEN 256
- Data input connector: Sub-D 15
- Data output connector: 4 X A1HC-7
- Maximum panel system: 32
- 4 contact-breaker on the front-side
- Housing: rack 19" - 1U with anodized aluminium front panel

### DREAMPANEL PSX-32

- Compatibility: DREAMPANEL ARCHI 256 & 1024 or DREAMPANEL GHOST 256
- Data input connector: Sub-D 15
- Data output connector: 4 X A1HC-7
- Maximum panel system: 32 (or 8 DREAMPANEL ARCHI 1024)
- 4 contact-breaker on the front-side
- Integrated power supply: 4 X 48VDC - 600 W
- Total power output: 2400 W
- Housing: rack 19" - 3U with anodized aluminium front panel

### DREAMPANEL DX-384

- Compatibility: DREAMPANEL WALL 64
- Data input connector: 3 X Sub-D 15
- Data output connector: 12 X RJ-45
- Maximum panel system: 384
- Housing: rack 19" - 1U with anodized aluminium front panel

DREAMPANEL distribution racks are designed for the DREAMPANEL products range linking. Inserted between DREAMPANEL DV-384 and the panels, they supply the signal and/or power distribution and are equipped with an embedded signal amplifier.

DREAMPANEL PX-32 dispatch data signal and electrical power up to 32 DREAMPANEL SCREEN 256 or DREAMPANEL FLOOR 256, split up in 4 lines of 8 tiles, with a maximum wiring distance of 50 m. Each line is electrically protected by a contact-breaker located on the front-side.

DREAMPANEL PSX-32, is a 48 VDC distribution rack, especially conceived for the DREAMPANEL GHOST 256, DREAMPANEL ARCHI 256 & 1024. With a maximum connecting distance of 25 m, it authorizes up to 32 tiles wiring in 4 lines, electrically protected by a contact-breaker.

DREAMPANEL DX-384 allows the signal supply of 384 DREAMPANEL 64 tiles maximum, up to a distance of 50 m.

IP 20 protection rating (Indoor use only)



# TECHNICAL SPECIFICATIONS LED STATIC LUMINAIRE

	EYEBALL 50 RGB	EYEBALL 100 RGB	SLIMLED 150 RGB	SLIMLED 150 AWB	SLIMLED 150 AWW	SLIMLED 150 FULL COLOR
<b>Optics</b>						
Secondary Optics	Yes	Yes	Yes	Yes	Yes	Yes
Beam Aperture	13°	13°	11°	11°	11°	19°
Optional Optic Filters	24° - 33° - 42°		13° - 24° - 33° - 42° - 33° X 13°			20° - 28° - 36° - 44° - 36° X 20°
<b>Source</b>						
LED Type	Luxeon K2	Luxeon K2	Luxeon K2	Luxeon K2	Luxeon K2	Tri-Color P5
LED Quantity	18	36	54	54	54	54
Light Output (lumens)	1 200	2 400	3 600	2 400	3 000	2 400
Rated Life (hours)	50 000	50 000	50 000	50 000	50 000	50 000
<b>Colours</b>						
Colour Mixing	RGB	RGB	RGB	AWB	AWW	RGB
Colour Depth	16,7 million	16,7 million	16,7 million	16,7 million	65 536	16,7 million
LED Colour: Amber	-	-	-	18	18	-
LED Colour: Blue	6	12	18	18	-	-
LED Colour: Green	6	12	18	-	-	-
LED Colour: Red	6	12	18	-	-	-
LED Colour: Cold White	-	-	-	18	36	-
LED Colour: Tri-colour RGB	-	-	-	-	-	54
Rainbow Colour Effect	Yes	Yes	Yes	No	No	Yes
Colour Temperature Selection	No	No	No	Yes	Yes	No
<b>Software Facilities</b>						
Display Showing Main Information	No	No	Yes	Yes	Yes	Yes
Software Upgrading Via DMX Signal	Yes	Yes	Yes	Yes	Yes	Yes
Cougar 2 Facilities	Yes	Yes	Yes	Yes	Yes	Yes
<b>Hardware Facilities</b>						
Back-lit LCD Display Functions	No	No	Yes	Yes	Yes	Yes
4 Menu Buttons For Setting Functions	No	No	Yes	Yes	Yes	Yes
<b>Control</b>						
Protocol	DMX 512	DMX 512	DMX 512	DMX 512	DMX 512	DMX 512
Channel Control	3 or 6	3 or 6	3, 4 or 6	3, 4 or 6	2, 3 or 5	3, 4 or 6
Input/Output Data Connector	XLR-3	XLR-3	Screw terminals	Screw terminals	Screw terminals	Screw terminals
<b>Power Supply</b>						
Architecture	Electronic	Electronic	Electronic	Electronic	Electronic	Electronic
Active PFC	Yes	Yes	Yes	Yes	Yes	Yes
Range	110 to 240 Volts - 50-60Hz		110 to 240 Volts - 50-60Hz		110 to 240 Volts - 50-60Hz	
Input/Output Power Connector	1,0 m power cable with male VDE plug		Screw terminals	Screw terminals	Screw terminals	Screw terminals
Power Consumption	50 W	100 W	150 W	150 W	150 W	150 W
<b>Cooling System</b>						
Type	Forced ventilation		Natural air-flow	Natural air-flow	Natural air-flow	Natural air-flow
Temperature Protection System	Yes	Yes	Yes	Yes	Yes	Yes
<b>Housing</b>						
Body Material	Self-extinguishing V0 class ABS PC		Die-cast aluminium		Die-cast aluminium	
Tempered Protection Glass	No	No	Yes	Yes	Yes	Yes
Protection Rating	IP20	IP20	IP66	IP66	IP66	IP66
<b>Installation</b>						
Working Position	Any	Any	Any	Any	Any	Any
Suspension System	Single-arm with 10 mm mounting hole		4 M6 inserts or one omega quarter-turn bracket (optional)			
Safety Cable Attachment Point	Yes	Yes	No	No	No	No
<b>Operating Parameters</b>						
Maximum Ambient Temperature (Ta)	40°C	40°C	40°C	40°C	40°C	40°C
Maximum Ambient Humidity	75% at 25°C	75% at 25°C	75% at 25°C	75% at 25°C	75% at 25°C	75% at 25°C
<b>Dimensions &amp; Weight</b>						
Dimensions (mm)	195 X 280 X 168	234 X 311 X 194	225 X 343 X 187	225 X 343 X 187	225 X 343 X 187	225 X 343 X 187
Weight (Kg)	2,7	4,5	6,1	6,1	6,1	6,1
<b>Product Code</b>						
Carbon Colour	021200	021400	022400	022410	022420	022440
Platinum Colour	-	-	022407	022417	022427	022447
<b>Controllers</b>						
Intellipower 150	-	-	-	-	-	-
Cougar 2	045330	045330	045330	045330	045330	045330
<b>Accessories</b>						
Filter Holder	-	-	-	-	-	-
Full Barndoor	-	-	-	-	-	-
Half Barndoor	-	-	-	-	-	-
Horizontal Barndoor	-	-	-	-	-	-
Vertical Barndoor	-	-	-	-	-	-
Wall Mounting Kit	-	-	022485	022485	022485	022485
13° Optic Filter	Included	Included	052313	052313	052313	052313 (20°)
24° Optic Filter	051124	051324	052324	052324	052324	052324 (28°)
33° Optic Filter	051133	051333	052333	052333	052333	052333 (36°)
42° Optic Filter	051142	051342	052342	052342	052342	052342 (44°)
33° X 13° Horizontal Optic Filter	-	-	052372	052372	052372	052372 (36° X 20°)
33° X 13° Vertical Optic Filter	-	-	052373	052373	052373	052373 (36° X 20°)
62° X 16° Horizontal Optic Filter	-	-	-	-	-	-
62° X 16° Vertical Optic Filter	-	-	-	-	-	-



# TECHNICAL SPECIFICATIONS LED STATIC LUMINAIRE

MODULED 150 RGB	MODULED 150 AWB	MODULED 150 AWW	MODULED 150 FULL COLOR	ARCLINE 50 RGB	ARCLINE 50 AWB	ARCLINE 50 AWW	ARCLINE 100 RGB
Yes	Yes	Yes	Yes	Yes	Yes	Yes	Yes
11°	11°	11°	19°	11°	11°	11°	11°
13° - 24° - 33° - 42° - 33° X 13° - 62° X 16°		20° - 28° - 36° - 44° - 36° X 20° - 63° X 22°		13° - 33° X 13°		13° - 33° X 13°	
Luxeon K2	Luxeon K2	Luxeon K2	Tri-Color P5	Luxeon K2	Luxeon K2	Luxeon K2	Luxeon K2
54	54	54	54	18	18	18	36
3 600	2 400	3 000	2 400	1 200	800	1 000	2 400
50 000	50 000	50 000	50 000	50 000	50 000	50 000	50 000
RGB	AWB	AWW	RGB	RGB	AWB	AWW	RGB
16,7 million	16,7 million	65 536	16,7 million	16,7 million	16,7 million	65 536	16,7 million
-	18	18	-	-	6	6	-
18	18	-	-	6	6	-	12
18	-	-	-	6	-	-	12
18	-	-	-	6	-	-	12
-	18	36	-	-	6	12	-
-	-	-	54	-	-	-	-
Yes	No	No	Yes	Yes	No	No	Yes
No	Yes	Yes	No	No	Yes	Yes	No
Yes	Yes	Yes	Yes	No	No	No	No
Yes	Yes	Yes	Yes	Yes	Yes	Yes	Yes
Yes	Yes	Yes	Yes	Yes	Yes	Yes	Yes
Yes	Yes	Yes	Yes	No	No	No	No
Yes	Yes	Yes	Yes	No	No	No	No
DMX 512	DMX 512	DMX 512	DMX 512	DMX 512	DMX 512	DMX 512	DMX 512
3, 4, 6, 9, 10 or 12	3, 4, 6, 9, 10 or 12	2, 3, 5, 6, 7 or 9	3, 4, 6, 9, 10 or 12	3, 4 or 6	3, 4 or 6	2, 3 or 5	3, 4, 6, 7 or 9
A1HC-7	A1HC-7	A1HC-7	A1HC-7	Screw terminals	Screw terminals	Screw terminals	Screw terminals
Electronic	Electronic	Electronic	Electronic	Electronic	Electronic	Electronic	Electronic
Yes	Yes	Yes	Yes	Yes	Yes	Yes	Yes
110 to 240 Volts - 50-60Hz	110 to 240 Volts - 50-60Hz	110 to 240 Volts - 50-60Hz	110 to 240 Volts - 50-60Hz	110 to 240 Volts - 50-60Hz	110 to 240 Volts - 50-60Hz	110 to 240 Volts - 50-60Hz	110 to 240 Volts - 50-60Hz
A1HC-7	A1HC-7	A1HC-7	A1HC-7	Screw terminals	Screw terminals	Screw terminals	Screw terminals
150 W	150 W	150 W	150 W	50 W	50 W	50 W	100 W
Natural air-flow	Natural air-flow	Natural air-flow	Natural air-flow	Natural air-flow	Natural air-flow	Natural air-flow	Natural air-flow
Yes	Yes	Yes	Yes	Yes	Yes	Yes	Yes
Die-cast aluminium	Die-cast aluminium	Die-cast aluminium	Die-cast aluminium	Extruded & die-cast aluminium	Extruded & die-cast aluminium	Extruded & die-cast aluminium	Extruded & die-cast aluminium
Yes	Yes	Yes	Yes	Yes	Yes	Yes	Yes
IP66	IP66	IP66	IP66	IP65	IP65	IP65	IP65
Any	Any	Any	Any	Any	Any	Any	Any
Yes	Yoke with retractable coupling	Yes	Yes	No	Two amovible yoke with position adjustment	No	No
40°C	40°C	40°C	40°C	40°C	40°C	40°C	40°C
75% at 25°C	75% at 25°C	75% at 25°C	75% at 25°C	75% at 25°C	75% at 25°C	75% at 25°C	75% at 25°C
476 X 178 X 97	476 X 178 X 97	476 X 178 X 97	476 X 178 X 97	505 X 70 X 77	505 X 70 X 77	505 X 70 X 77	979 X 70 X 77
6,4	6,4	6,4	6,4	2,9	2,9	2,9	5,6
025200	025210	025220	025240	023300	023310	023320	023400
025207	025217	025227	025247	023307	023317	023327	023407
-	-	-	-	-	-	-	-
045330	045330	045330	045330	045330	045330	045330	045330
025392	025392	025392	025392	-	-	-	-
025393	025393	025393	025393	-	-	-	-
025394	025394	025394	025394	-	-	-	-
025395	025395	025395	025395	-	-	-	-
025396	025396	025396	025396	-	-	-	-
-	-	-	-	-	-	-	-
053313	053313	053313	053313 (20°)	053113 (set of 4)	053113 (set of 4)	053113 (set of 4)	053113 (set of 4)
053324	053324	053324	053324 (28°)	-	-	-	-
053333	053333	053333	053333 (36°)	-	-	-	-
053342	053342	053342	053342 (44°)	-	-	-	-
053372	053372	053372	053372 (36° X 20°)	053172 (set of 4)	053172 (set of 4)	053172 (set of 4)	053172 (set of 4)
053373	053373	053373	053373 (36° X 20°)	053173 (set of 4)	053173 (set of 4)	053173 (set of 4)	053173 (set of 4)
053382	053382	053382	053382 (63° X 22°)	-	-	-	-
053383	053383	053383	053383 (63° X 22°)	-	-	-	-

# TECHNICAL SPECIFICATIONS LED STATIC LUMINAIRE

	ARCALINE 100 AWB	ARCALINE 100 AWW	STREETLINE 50 RGB	STREETLINE 50 AWB	STREETLINE 50 AWW	STREETLINE 100 RGB
<b>Optics</b>						
Secondary Optics	Yes	Yes	Yes	Yes	Yes	Yes
Beam Aperture	11°	11°	11°	11°	11°	11°
Optional Optic Filters	13° - 33° X 13°	13° - 33° X 13°	13° - 33° X 13°	13° - 33° X 13°	13° - 33° X 13°	13° - 33° X 13°
<b>Source</b>						
LED Type	Luxeon K2	Luxeon K2	Luxeon K2	Luxeon K2	Luxeon K2	Luxeon K2
LED Quantity	36	36	18	18	18	36
Light Output (lumens)	1 600	2 000	1 200	800	1 000	2 400
Rated Life (hours)	50 000	50 000	50 000	50 000	50 000	50 000
<b>Colours</b>						
Colour Mixing	AWB	AWW	RGB	AWB	AWW	RGB
Colour Depth	16,7 million	65.536	16,7 million	16,7 million	65.536	16,7 million
LED Colour: Amber	12	12	-	6	6	-
LED Colour: Blue	12	-	6	6	-	12
LED Colour: Green	-	-	6	-	-	12
LED Colour: Red	-	-	6	-	-	12
LED Colour: Cold White	12	24	-	6	12	-
LED Colour: Tri-colour RGB	-	-	-	-	-	-
Rainbow Colour Effect	No	No	Yes	No	No	Yes
Colour Temperature Selection	Yes	Yes	No	Yes	Yes	No
<b>Software Facilities</b>						
Display Showing Main Information	No	No	No	No	No	No
Software Upgrading Via DMX Signal	Yes	Yes	Yes	Yes	Yes	Yes
Cougar 2 Facilities	Yes	Yes	Yes	Yes	Yes	Yes
<b>Hardware Facilities</b>						
Back-lit LCD Display Functions	No	No	No	No	No	No
4 Menu Buttons For Setting Functions	No	No	No	No	No	No
<b>Control</b>						
Protocol	DMX 512	DMX 512	DMX 512	DMX 512	DMX 512	DMX 512
Channel Control	3, 4, 6, 7 or 9	2, 3, 4, 5 or 7	3, 4 or 6	3, 4 or 6	2, 3 or 5	3, 4, 6, 7 or 9
Input/Output Data Connector	Screw terminals	Screw terminals	Screw terminals	Screw terminals	Screw terminals	Screw terminals
<b>Power Supply</b>						
Architecture	Electronic	Electronic	Electronic	Electronic	Electronic	Electronic
Active PFC	Yes	Yes	Yes	Yes	Yes	Yes
Range	110 to 240 Volts - 50-60Hz	110 to 240 Volts - 50-60Hz	110 to 240 Volts - 50-60Hz	110 to 240 Volts - 50-60Hz	110 to 240 Volts - 50-60Hz	110 to 240 Volts - 50-60Hz
Input/Output Power Connector	Screw terminals	Screw terminals	Screw terminals	Screw terminals	Screw terminals	Screw terminals
Power Consumption	100 W	100 W	50 W	50 W	50 W	100 W
<b>Cooling System</b>						
Type	Natural air-flow	Natural air-flow	Natural air-flow	Natural air-flow	Natural air-flow	Natural air-flow
Temperature Protection System	Yes	Yes	Yes	Yes	Yes	Yes
<b>Housing</b>						
Body Material	Extruded & die-cast aluminium		Extruded aluminium & stainless steel		Extruded aluminium & stainless steel	
Tempered Protection Glass	Yes	Yes	Yes	Yes	Yes	Yes
Protection Rating	IP65	IP65	IP67	IP67	IP67	IP67
<b>Installation</b>						
Working Position	Any	Any	Any	Any	Any	Any
Suspension System	Two amovable yoke with position adjustment		Recessed mount	Recessed mount	Recessed mount	Recessed mount
Safety Cable Attachment Point	No	No	No	No	No	No
<b>Operating Parameters</b>						
Maximum Ambient Temperature (Ta)	40°C	40°C	40°C	40°C	40°C	40°C
Maximum Ambient Humidity	75% at 25°C	75% at 25°C	75% at 25°C	75% at 25°C	75% at 25°C	75% at 25°C
<b>Dimensions &amp; Weight</b>						
Dimensions (mm)	979 X 70 X 77	979 X 70 X 77	553 X 108 X 96	553 X 108 X 96	553 X 108 X 96	1026 X 108 X 96
Weight (Kg)	5,6	5,6	4,9	4,9	4,9	8,7
<b>Product Code</b>						
Carbon Colour	023410	023420	023700	023710	023720	023800
Platinum Colour	023417	023427	-	-	-	-
<b>Controllers</b>						
Intellipower 150	-	-	-	-	-	-
Cougar 2	045330	045330	045330	045330	045330	045330
<b>Accessories</b>						
Filter Holder	-	-	-	-	-	-
Full Barndoor	-	-	-	-	-	-
Half Barndoor	-	-	-	-	-	-
Horizontal Barndoor	-	-	-	-	-	-
Vertical Barndoor	-	-	-	-	-	-
Wall Mounting Kit	-	-	-	-	-	-
13° Optic Filter	053113 (set of 4)	053113 (set of 4)	053113 (set of 4)	053113 (set of 4)	053113 (set of 4)	053113 (set of 4)
24° Optic Filter	-	-	-	-	-	-
33° Optic Filter	-	-	-	-	-	-
42° Optic Filter	-	-	-	-	-	-
33° X 13° Horizontal Optic Filter	053172 (set of 4)	053172 (set of 4)	053172 (set of 4)	053172 (set of 4)	053172 (set of 4)	053172 (set of 4)
33° X 13° Vertical Optic Filter	053173 (set of 4)	053173 (set of 4)	053173 (set of 4)	053173 (set of 4)	053173 (set of 4)	053173 (set of 4)
62° X 16° Horizontal Optic Filter	-	-	-	-	-	-
62° X 16° Vertical Optic Filter	-	-	-	-	-	-



# TECHNICAL SPECIFICATIONS LED STATIC LUMINAIRE

STREETLINE 100 AWB	STREETLINE 100 AWW	EYEFLOOR 50 RGB	EYEFLOOR 50 AWW	EYESEA 50 SX RGB	EYESEA 50 SX AWW	EYESEA 50 SXB RGB	EYESEA 50 SXB AWW
Yes	Yes	Yes	Yes	Yes	Yes	Yes	Yes
11°	11°	11°	11°	11°	11°	11°	11°
13° - 33° X 13°	13° - 33° X 13°	24° - 33° - 42°	24° - 33° - 42°	24° - 33° - 42°	24° - 33° - 42°	24° - 33° - 42°	24° - 33° - 42°
Luxeon K2	Luxeon K2	Luxeon K2	Luxeon K2	Luxeon K2	Luxeon K2	Luxeon K2	Luxeon K2
36	36	18	18	18	18	18	18
1 600	2 000	1 200	1 000	1 200	1 000	1 200	1 000
50 000	50 000	50 000	50 000	50 000	50 000	50 000	50 000
AWB	AWW	RGB	AWW	RGB	AWW	RGB	AWW
16,7 million	65.536	16,7 million	65.536	16,7 million	65.536	16,7 million	65.536
12	12	-	6	-	6	-	6
12	-	6	-	6	-	6	-
-	-	6	-	6	-	6	-
-	-	6	-	6	-	6	-
12	24	-	12	-	12	-	12
-	-	-	-	-	-	-	-
No	No	Yes	No	Yes	No	Yes	No
Yes	Yes	No	Yes	No	Yes	No	Yes
No	No	No	No	No	No	No	No
Yes	Yes	No	No	No	No	No	No
Yes	Yes	Via intellipower 150	Via intellipower 150	Via intellipower 150	Via intellipower 150	Via intellipower 150	Via intellipower 150
No	No	No	No	No	No	No	No
No	No	No	No	No	No	No	No
DMX 512	DMX 512	DMX 512 via intellipower 150		DMX 512 via intellipower 150		DMX 512 via intellipower 150	
3, 4, 6, 7 or 9	2, 3, 4, 5 or 7	3	2	3	2	3	2
Screw terminals	Screw terminals	-	-	-	-	-	-
Electronic	Electronic	External PSU	External PSU	External PSU	External PSU	External PSU	External PSU
Yes	Yes	-	-	-	-	-	-
110 to 240 Volts - 50-60Hz		-	-	-	-	-	-
Screw terminals	Screw terminals	Screw terminals	Screw terminals	Screw terminals	Screw terminals	Screw terminals	Screw terminals
100 W	100 W	50 W	50 W	50 W	50 W	50 W	50 W
Natural air-flow	Natural air-flow	Natural air-flow	Natural air-flow	Natural air-flow	Natural air-flow	Natural air-flow	Natural air-flow
Yes	Yes	Temperature sensor	Temperature sensor	Temperature sensor	Temperature sensor	Temperature sensor	Temperature sensor
Extruded aluminium & stainless steel		Die-cast aluminium with stainless steel ring		Die-cast stainless steel & stainless steel ring		Die-cast stainless steel & stainless steel ring	
Yes	Yes	Yes	Yes	Yes	Yes	Yes	Yes
IP67	IP67	IP67	IP67	IP68	IP68	IP68	IP68
Any	Any	Any	Any	Any	Any	Any	Any
Recessed mount	Recessed mount	Recessed mount	Recessed mount	Recessed mount	Recessed mount	Bracket	Bracket
No	No	No	No	No	No	No	No
40°C	40°C	40°C	40°C	40°C	40°C	40°C	40°C
75% at 25°C	75% at 25°C	75% at 25°C	75% at 25°C	75% at 25°C	75% at 25°C	75% at 25°C	75% at 25°C
1026 X 108 X 96	1026 X 108 X 96	180 X 180 X 68	180 X 180 X 68	165 X 165 X 75	165 X 165 X 75	150 X 179 X 75	150 X 179 X 75
8,7	8,7	1,6	1,6	2,7	2,7	2,8	2,8
023810	023820	021730	021740	021810	021820	021830	021840
-	-	-	-	-	-	-	-
-	-	063520	063520	063520	063520	063520	063520
045330	045330	045330	045330	045330	045330	045330	045330
-	-	-	-	-	-	-	-
-	-	-	-	-	-	-	-
-	-	-	-	-	-	-	-
-	-	-	-	-	-	-	-
053113 (set of 4)	053113 (set of 4)	-	-	-	-	-	-
-	-	051124	051124	051124	051124	051124	051124
-	-	051133	051133	051133	051133	051133	051133
-	-	051142	051142	051142	051142	051142	051142
053172 (set of 4)	053172 (set of 4)	-	-	-	-	-	-
053173 (set of 4)	053173 (set of 4)	-	-	-	-	-	-
-	-	-	-	-	-	-	-
-	-	-	-	-	-	-	-

# TECHNICAL SPECIFICATIONS LED MOVING HEAD LUMINAIRE

	EASYCOLOR 50 RGB	EASYCOLOR 50 AWW	EASYCOLOR 50 FULL COLOR	EASYCOLOR 100 RGB	EASYCOLOR 100 AWW	EASYCOLOR 100 FULL COLOR
<b>Optics</b>						
Secondary Optics	Yes	Yes	Yes	Yes	Yes	Yes
Beam Aperture (with optic filter)	13°	13°	20°	13°	13°	20°
Optional Optic Filters	24° - 33° - 42°	24° - 33° - 42°	28° - 36° - 44°	24° - 33° - 42°	24° - 33° - 42°	28° - 36° - 44°
<b>Source</b>						
LED Type	Luxeon K2	Luxeon K2	Tri-Color P5	Luxeon K2	Luxeon K2	Tri-Color P5
LED Quantity	18	18	18	36	36	36
Light Output (lumens)	1 200	1 000	800	2 400	2 000	1 600
Rated Life (hours)	50 000	50 000	50 000	50 000	50 000	50 000
<b>Movement</b>						
Head Movement With 8 Or 16 Bit Resolution	Yes	Yes	Yes	Yes	Yes	Yes
Automatic Pan & Tilt Re-positioning	Yes	Yes	Yes	Yes	Yes	Yes
Pan Movement	650°	650°	650°	630°	630°	630°
Tilt Movement	280°	280°	280°	270°	270°	270°
<b>Colours</b>						
Colour Mixing	RGB	AWW	RGB	RGB	AWW	RGB
Colour Depth	16,7 million	65 536	16,7 million	16,7 million	65 536	16,7 million
LED Colour: Amber	-	6	-	-	12	-
LED Colour: Blue	6	-	-	12	-	-
LED Colour: Green	6	-	-	12	-	-
LED Colour: Red	6	-	-	12	-	-
LED Colour: Cold White	-	12	-	-	24	-
LED Colour: Tri-colour RGB	-	-	18	-	-	36
Rainbow Colour Effect	Yes	No	Yes	Yes	No	Yes
Colour Temperature Selection	No	Yes	No	No	Yes	No
<b>Dimmer, Strobe</b>						
Electronic Dimmer With No Colour Variation	Yes	Yes	Yes	Yes	Yes	Yes
High-speed White Or Full Colour Strobe	Yes	White only	Yes	Yes	White only	Yes
Strobe Flash Rate	1-25 fps	1-25 fps	1-25 fps	1-25 fps	1-25 fps	1-25 fps
<b>Software Facilities</b>						
8/16 Bit Movement Resolution Selection	Yes	Yes	Yes	Yes	Yes	Yes
Pan & Tilt Inversion Facility	Yes	Yes	Yes	Yes	Yes	Yes
Control Of Cooling Parameters	Yes	Yes	Yes	Yes	Yes	Yes
Display Showing Main Information	Yes	Yes	Yes	Yes	Yes	Yes
Software Upgrading Via DMX Signal	Yes	Yes	Yes	Yes	Yes	Yes
Cougar 2 Facilities	Yes	Yes	Yes	Yes	Yes	Yes
<b>Hardware Facilities</b>						
Back-lit LCD Display Functions	Yes	Yes	Yes	Yes	Yes	Yes
4 Menu Buttons For Setting Functions	Yes	Yes	Yes	Yes	Yes	Yes
<b>Control</b>						
Protocol	DMX 512	DMX 512	DMX 512	DMX 512	DMX 512	DMX 512
Channel Control	10	9	10	10	9	10
Input/Output Data Connector	XLR-3	XLR-3	XLR-3	XLR-3	XLR-3	XLR-3
<b>Power Supply</b>						
Architecture	Electronic	Electronic	Electronic	Electronic	Electronic	Electronic
Active PFC	Yes	Yes	Yes	Yes	Yes	Yes
Range	110 to 240 Volts - 50-60Hz			110 to 240 Volts - 50-60Hz		
Input Power Connector	1,0 m power cable with VDE plug			1,0 m power cable with VDE plug		
Power Consumption	80 W	80 W	80 W	130 W	130 W	130 W
<b>Cooling System</b>						
Type	Forced ventilation			Forced ventilation		
Temperature Protection System	Yes	Yes	Yes	Yes	Yes	Yes
<b>Housing</b>						
Body Material	Self-extinguishing V0 class ABS PC			Self-extinguishing V0 class ABS PC		
Handle For Transportation	Yes	Yes	Yes	Yes	Yes	Yes
Protection Rating	IP20	IP20	IP20	IP20	IP20	IP20
<b>Installation</b>						
Suspension System	Two omega quarter-turn bracket			Two omega quarter-turn bracket		
Safety Cable Attachment Point	Yes	Yes	Yes	Yes	Yes	Yes
<b>Operating Parameters</b>						
Working Position	Any	Any	Any	Any	Any	Any
Maximum Ambient Temperature (Ta)	40°C	40°C	40°C	40°C	40°C	40°C
Maximum Ambient Humidity	75% at 25°C	75% at 25°C	75% at 25°C	75% at 25°C	75% at 25°C	75% at 25°C
<b>Dimensions &amp; Weight</b>						
Dimensions (mm)	280 X 347 X 275	280 X 347 X 275	280 X 347 X 275	310 X 388 X 350	310 X 388 X 350	310 X 388 X 350
Weight (Kg)	7,5	7,5	7,5	9,1	9,1	9,1
<b>Product Code</b>						
Carbon Colour	012200	012220	012240	012400	012420	012440
Snow Colour	-	-	-	-	-	-
Platinum Colour	-	-	-	-	-	-
<b>Accessories</b>						
13° Optic Filter	Included	Included	Included (20°)	Included	Included	Included (20°)
24° Optic Filter	051124	051124	051124 (28°)	051324	051324	051324 (28°)
33° Optic Filter	051133	051133	051133 (36°)	051333	051333	051333 (36°)
42° Optic Filter	051142	051142	051142 (44°)	051342	051342	051342 (44°)



# TECHNICAL SPECIFICATIONS LED IMAGING DISPLAY

	DREAMPANEL WALL 64	DREAMPANEL FLOOR 256	DREAMPANEL SCREEN 256	DREAMPANEL ARCHI 256	DREAMPANEL ARCHI 1024	DREAMPANEL GHOST 256
<b>Optics</b>						
Diffusion Filter	No	Yes	No	Yes	Yes	No
Viewing Angle	105°	170°	115°	170°	170°	150°
<b>Source</b>						
LED Type	Tri-Color PLCC-6	Tri-Color PLCC-6	Tri-Color PLCC-6	Tri-Color PLCC-6	Tri-Color PLCC-6	Tri-Color PLCC-6
Pixel Resolution	8 X 8	16 X 16	16 X 16	16 X 16	32 X 32	16 X 16
Pixel Pitch (mm)	31,25	31,25	31,25	31,25	31,25	23,44
Panel Pixel Population	64	256	256	256	1 024	256
Pixel Population/m <sup>2</sup>	1 024	1 024	1 024	1 024	1 024	1 820
Brightness (nit or cd/m <sup>2</sup> )	2 800	2 700	2 850	2 700	2 700	5 100
Lifetime (50% brightness)	50 000	50 000	50 000	50 000	50 000	50 000
<b>Image</b>						
Maximum Resolution	1024 X 768	1024 X 768	1024 X 768	1024 X 768	1024 X 768	1024 X 768
Maximum Screen Dimensions	32 X 24 m	32 X 24 m	32 X 8 m	32 X 24 m	32 X 24 m	24 X 9 m
Maximum Screen Surface	768 m <sup>2</sup>	768 m <sup>2</sup>	256 m <sup>2</sup>	768 m <sup>2</sup>	768 m <sup>2</sup>	216 m <sup>2</sup>
Maximum Panel System	12 288	3 072	1 024	3 072	768	1 152
<b>Colours</b>						
Colour Depth	16,7 million	16,7 million	16,7 million	16,7 million	16,7 million	16,7 million
Colour Control	8 bit	8 bit	8 bit	8 bit	8 bit	8 bit
Internal Colour Control	14 bit	14 bit	14 bit	14 bit	14 bit	14 bit
Pixel Colour Calibration	Yes	Yes	Yes	Yes	Yes	Yes
<b>Software Facilities</b>						
Configuration Via Dreampanel DV-384	Yes	Yes	Yes	Yes	Yes	Yes
Software Upgrading Via Dreampanel DV-384	Yes	Yes	Yes	Yes	Yes	Yes
<b>Control</b>						
Protocol	AYRTON Dedicated Protocol, provided by DREAMPANEL DV-384 Digital Video Controller					
Input/Output Data Connector	RJ45	A1HC-7	A1HC-7	A1HC-7	A1HC-7	SUB-D 15
<b>Power Supply</b>						
Architecture	Electronic PSU	Electronic PSU	Electronic PSU	External PSU	External PSU	External PSU
Active PFC	Yes	Yes	Yes	-	-	-
Range	110 to 240 Volts	110 to 240 Volts	110 to 240 Volts	48 Volts DC	48 Volts DC	48 Volts DC
Input/Output Power Connector	IEC	A1HC-7	A1HC-7	A1HC-7	A1HC-7	SUB-D 15
Power Consumption At Full Intensity (panel)	15 W	60 W	60 W	60 W	240 W	60 W
Power Consumption At Full Intensity (m <sup>2</sup> )	240 W	240 W	240 W	240 W	240 W	430 W
<b>Cooling System</b>						
Type	Natural air-flow	Natural air-flow	Natural air-flow	Natural air-flow	Natural air-flow	Natural air-flow
Temperature Protection System	Yes	Yes	Yes	Yes	Yes	Yes
<b>Housing</b>						
Body Material	Self-extinguishing V0 class ABS PC			Extruded aluminium		V0 class PC
Front Surface Material	V0 class ABS PC	Laminated glass	V0 class PC	Laminated glass	Laminated glass	V0 class PC
Protection Rating	IP20	IP21	IP65	IP65	IP65	IP65
<b>Installation</b>						
Working Position (standard)	Wall Mount	Floor Mount	Screen Mount	Floor Mount	Floor Mount	Screen Mount
Maximum Height Screen Construction	-	-	8 m	-	-	9 m
Total Load Charge Per Panel (Kg)	-	320	-	320	1 280	-
Total Load Charge Per m <sup>2</sup> (Kg)	-	1 280	-	1 280	1 280	-
Maximum Cable Distance From Distribution Rack	50 m	50 m	50 m	25 m	25 m	25 m
<b>Operating Parameters</b>						
Maximum Ambient Temperature (Ta)	40°C	40°C	40°C	40°C	40°C	40°C
Maximum Ambient Humidity	75% at 25°C	75% at 25°C	75% at 25°C	75% at 25°C	75% at 25°C	75% at 25°C
<b>Dimensions &amp; Weight</b>						
Dimensions (mm)	250 X 250 X 50	500 X 500 X 80	500 X 500 X 62	500 X 500 X 60	1 000 X 1 000 X 60	375 X 375 X 40
Weight (Kg)	1,2	12,9	6,1	13,0	48,0	1,9
<b>Product Codes</b>						
Carbon Colour	027530	027730	027630	027430	027440	-
Snow Colour	027532	-	-	-	-	-
Crystal Colour	-	-	-	-	-	027230
<b>Controllers</b>						
DV-384 - Digital Video Controller	027820	027820	027820	027820	027820	027820
PSX-32 - 2400 W Power Supply Distribution Rack	-	-	-	027835	027835	027835
PX-32 - Power Distribution Rack	-	027840	027840	-	-	-
DX-384 - Data Distribution Rack	027845	-	-	-	-	-
<b>Accessories</b>						
Touring Mounting Kit	-	-	027680	-	-	027280
0,5 m Tube For Touring Mounting Kit	-	-	027685	-	-	-
1 m Tube For Touring Mounting Kit	-	-	027686	-	-	-
1,5 m Tube For Touring Mounting Kit	-	-	-	-	-	027287
0,28 m Multifunction Cable	-	077203	077203	077403	077403	-
0,70 m Multifunction Cable	-	077207	077207	077407	077407	-
1 m Multifunction Cable	-	077210	077210	077410	077410	027275
2 m Multifunction Cable	-	077220	077220	077420	077420	077420
5 m Multifunction Cable	-	077250	077250	077450	077450	077450
10 m Multifunction Cable	-	077260	077260	077460	077460	077460
25 m Multifunction Cable	-	077270	077270	077470	077470	077470
50 m Multifunction Cable	-	077280	077280	077480	077480	077480

## LIMITED WARRANTY

Manufacturer warrants to the Purchaser that each Product manufactured and sold by it will be free from defects in material and workmanship in its intended use (normal wear and tear excepted) for the period of one year from date of Purchaser's purchase (the invoice date) from Manufacturer. Manufacturer's warranty flows only to Purchaser. If any Product covered by this warranty is returned by Purchaser in accordance with Manufacturer's Products Return Policy, including without limitation its return authorization provisions, within the applicable warranty period set forth above, and upon examination Manufacturer determines to its satisfaction that such Product was defective in material or workmanship at the time of delivery to the Purchaser, Manufacturer will, at its option, repair or replace the Product or the defective part thereof, or reimburse Purchaser for the purchase price.

For purposes of clarity, "repair or replace the Product or the defective part thereof" does not include any reinstallation costs or expenses. If Manufacturer chooses to replace the Product and is not able to do so because it has been discontinued or is not available, Manufacturer may replace it with a comparable product.

The foregoing notwithstanding, Manufacturer will not be responsible for damage to any Product resulting from misuse, negligence, accident or resulting from repairs or alterations made by any person or firm not duly authorized by Manufacturer in writing.

Purchaser shall convey with each Product distributed to end users the MANUFACTURER'S LIMITED WARRANTY included by Manufacturer with such Product, and, if Manufacturer determines that the appropriate remedy for a defective product is refund of Purchaser's purchase price, Purchaser shall refund to the end user (or arrange for the refund to the end user of) the full purchase price paid by the end user for such defective Product.

## CREDITS

Catalogue design and creation under the authority of Yvan Péard (AYRTON).

Artistic Direction: Antonio Simões (Agence ANIS - Courbevoie).

Products and Brands specifications: Anne-Marie Lamérand, Sébastien Belse, Florent François and Yvan Péard (AYRTON).

Technical specifications: Christophe Benoist, Florent François and Cyril Union (AYRTON).

Creation & realization: Agence ANIS - Courbevoie.

Printing: Imprimerie TAAG - Grigny.

Products illustration: Daniel Bésikian - Paris.

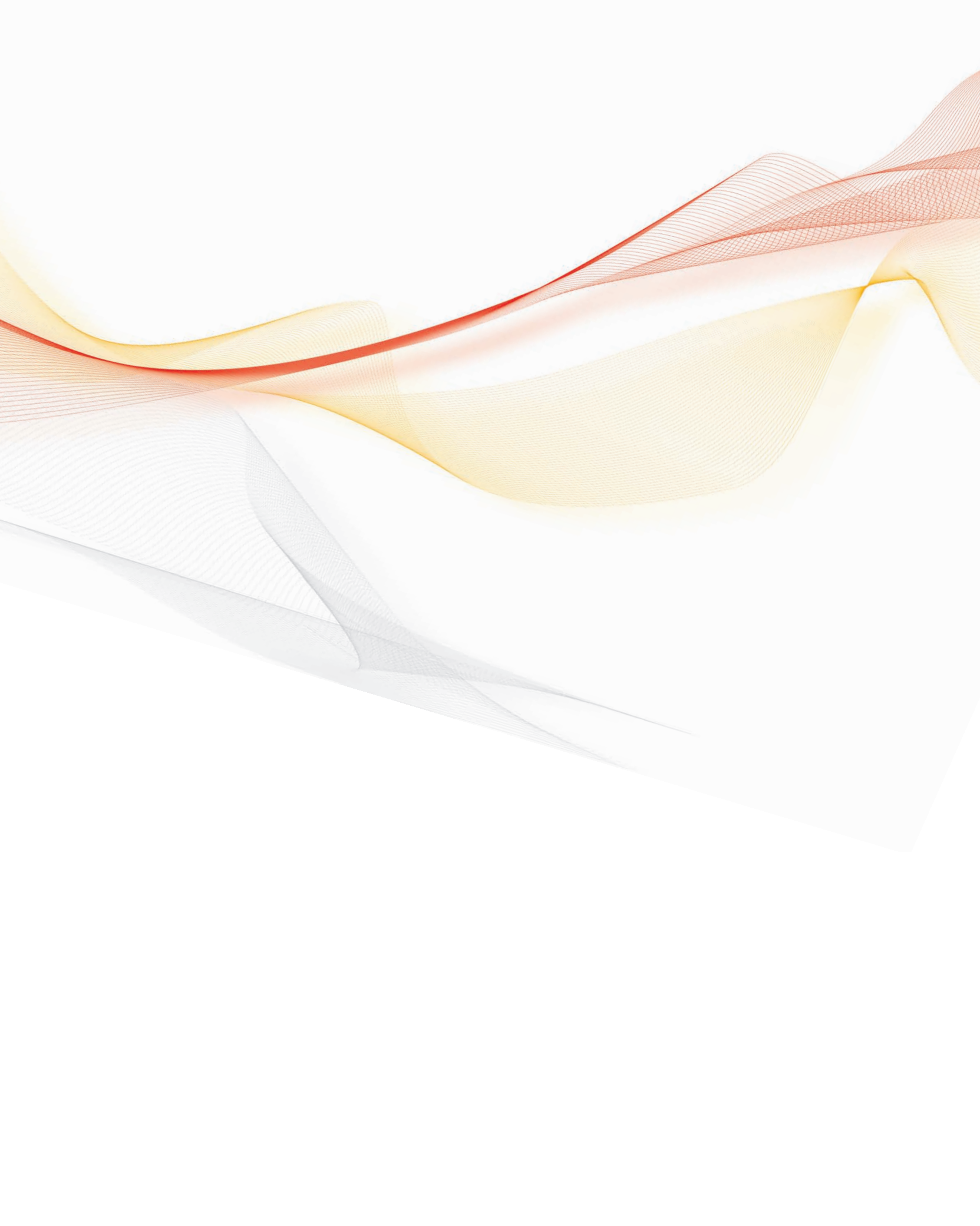
Photos applications:

Special thanks to those who provided us with fantastic illustrations.

Page 06: Ayrton headquarters (France): Arnaud Leggue (Axente) - Ayrton production (France): Monique Cussigh (Sono Magazine) - Superstar (Germany): Lightpower - Page 07: Cinecitta 2007 (Italy): Targetti - Da Weasel Tour 2007 (Portugal): Pedro Magalhães (Europalco) - Page 10: Bound (France): Gérard Giraudon (Color Sonic) - Page 11: Relaxation Zone (UK): Ian Kirby (LED Lites) - B-Box (France): Gérard Giraudon (Color Sonic) - Page 12: Buddha Bar (France): Gérard Giraudon (Color Sonic) - CCF: Impact Evénement - Page 13: Casino de Besançon (France): Michel Ollivier - Skai TV studio (Greece): Ian Kirby (LED Lites) - Page 15: Boutique Lacoste (France): Jean-Claude Guilloux (Impact Evénement) - Centre Commercial Les Quatre Temps (France): Unibail - Combien Ça Coûte - TF1 (France): Impact Evénement - Page 17: Le Petit Palais (France): Jean-Claude Guilloux (Impact Evénement) - Club 82 (France): Gérard Giraudon (Color Sonic) - Page 19: Casino Le Havre (France): Gérard Giraudon (Color Sonic) - Casino de Niderbronn (France): Michel Ollivier - Page 20: Casino de Niderbronn (France): Michel Ollivier - Page 21: Nina Ricci (France): Impact Evénement - Page 22: Boutique Lacoste (France): Jean-Claude Guilloux (Impact Evénement) - Bound (France): Gérard Giraudon (Color Sonic) - White (Luxembourg): Gérard Giraudon (Color Sonic) - Page 23: Bound (France): Gérard Giraudon (Color Sonic) - Page 24: Hit Machine (France): Impact Evénement - Page 27: B-Box (France): Gérard Giraudon (Color Sonic) - Superstar (Germany): Lightpower - Page 28: Hit Machine (France): Impact Evénement - Page 29: Superstar (Germany): Lightpower - Page 30: Gatecrasher (UK): Mondiale Publishing - Page 31: Cinecitta 2007 (Italy): Targetti - Page 34: Cinecitta 2007 (Italy): Targetti - Page 35: Festival RTP da Canção 2006 (Portugal) Pedro Magalhães (Europalco) - Globos de Ouro 2007 (Portugal): Pedro Magalhães (Europalco) - Page 36: Prolight+Sound 2007 (Germany): Florent François (Ayrton) - Page 37: Prolight+Sound 2007 (Germany): Florent François (Ayrton) - Da Weasel Tour 2007 (Portugal): Pedro Magalhães (Europalco) - Page 38: Cinecitta 2007 (Italy): Targetti - Page 39: Cinecitta 2007 (Italy): Targetti - Page 41: Hit Machine (France): Impact Evénement.

AYRTON, ARCALINE, DREAMPANEL, EASYCOLOR, EYEBALL, SLIMLED, STREETLINE, are AYRTON registered Trademarks. All rights reserved. DREAMPANEL, EASYCOLOR, EYEBALL, MODULED, SLIMLED are patented models. AYRTON products may be subject to modification even without notice. Pictures featuring in this catalogue are non contractual. The publisher declines any responsibility for any eventual missing or incorrect information given. © AYRTON 2007 - All reproduction forbidden except with express written approval.







Le parc de l'Événement  
1, allée d'Effiat  
F91160 - Longjumeau  
France



**AYRTON**  
Light in action

Tél.: 33 (0) 1 69 10 33 90  
Fax: 33 (0) 1 69 10 33 91  
contact@ayrton.eu  
[www.ayrton.eu](http://www.ayrton.eu)